



*Regal Assets Group Holding, Ltd.*

ABOUT

## Regal Assets Group Holding, Ltd.

---

Regal Assets Group Holding, Ltd. is an international investment company that holds a group of subsidiaries operating in China, USA, United Arab Emirates, Thailand, Australia, Cambodia, Japan and Western European countries. The holding company is registered in Dubai International Financial Centre (DIFC). The first-class private office environment with a modern management system is the center of our investment activities, assets management, marketing, R&D and E-commerce.



## REGAL ASSETS GROUP HOLDING LTD HAS INVESTMENTS



Focusing on Agriculture Sector, Desert Greening, Tourism, Rent A Car, Luxury Yacht, 5G Technology, and other business activities, the holding now plays an active role in stimulating and guiding the development of its constituent companies, all well-established entities and leading subject matter experts in their respective fields. Regal Assets Group Holding, Ltd. not only has grown steadily to a prominent Middle Eastern investment and business group but also has repeatedly set trends and redefined business understanding of just how diverse and adventurous an organization can be.





## INVESTMENT FOCUSING

### VERTICAL FARMING



### TOURISM



### RENT A CAR



### 5G TECHNOLOGY



### BLOCKCHAIN TECHNOLOGY



### HOSPITALITY



### HEALTHCARE & INSURANCE



### VIP & LUXURY YACHT

## Subsidiaries

### Maintains a strategic relationship

Regal Assets Group Holding, Ltd. also maintains a strategic relationship with its subsidiary companies, Regal Assets Tourism LLC and Regal Assets Rent a Car LLC. We maintain close relationships with their investment structures, funds, and asset managers, and is perpetually devoting efforts to developing its networks to identify appropriate investment opportunities.

The group uses an open expansion policy and aspires to continue its evolution into new territories with a portfolio that embraces progressiveness and professionalism.





REGAL ASSETS GROUP HOLDING, LTD.

## **Strategy & Vision**

The company has a long-term investment perspective and prefers to grow organically through acquisitions in fields where the management has significant experience. The company makes most investments using its equity capital, which allows optimum flexibility in terms of financing, and consequently swift investment decisions.

Our focus on high-performance standards results in mutually beneficial outcomes for both the group and the economies it operates in. We not only do high standards to improve local capacity and competition, but also establish world-class practice among employees and partners, enabling their growth.



REGAL ASSETS GROUP HOLDING, LTD.

## Values

We have identified core values that frame our actions across all of our business interests. Our corporate culture and values are an essential baseline to help us move forward and improve our performance employing disruptive technology.

### Integrity

Regal Assets Group Holding, Ltd. is attached to upholding the highest standards of business ethics and integrity. The composition of our board reflects this vision and it is central to our business culture.

### Respect

We fully respect our partners and our people, local customs and religious and the cultural environments where we do business. It is a genuine hallmark of Regal Assets Group Holding, Ltd. in all its dealings, across all our activities.





**Management:** The company implements a scientific management system. We emphasize the strict implementation of regulations and systems to meet with the requirements of international standards. Also, we simplify management structures, as well as related companies that improve greatly our management transparency and business performance.

## Quality

The Company is committed to establishing long-term cooperation with customers as well as addressing the personalized needs of different customers with high and new technology. Also, we know that solid, secure investments go hand in hand with stringent due diligence and attention to detail on our part, and also with robust, sustainable products and projects that will stand the test of time. Uncompromising quality is the bedrock that allows us to move swiftly and effectively, to seize each strategic investment opportunity.

## Creativity

Creative business thinking can only thrive in a team with great experience and expertise. Regal Assets Group Holding, Ltd. offers a depth and range of know-how that allows us to engineer investment solutions where others may lack the necessary vision.



*Regal Assets Group Holding, Ltd.*

Unit 401A, Level 4, Park Towers  
Dubai International Financial Centre (DIFC)  
Dubai, United Arab Emirates

[Info@RegalAssetsLtd.com](mailto:Info@RegalAssetsLtd.com)  
[www.RegalAssetsLtd.com](http://www.RegalAssetsLtd.com)





TOURISM



ABOUT

## Regal Assets Tourism LLC.

---



Regal Assets Tourism is a Destination Management Company in UAE, it is a subsidiary of Regal Assets Group Holding Ltd. Office located in Business Bay, next to Dubai Downtown.

We offer bespoke tourism packages to the UAE. We tailor-make tourism packages to suit any budget and can handle arrangements for groups of any size.

Our dedicated team has been creating special moments in the UAE for over 5 years and is dedicated to ensuring a memorable time from the moment you arrive at the moment you leave the UAE.

Holding places, people and customs through professional guides, modern transportation, quality hotels, fine restaurants, and other key attraction vendors.

We handle all arrangements from hotel stays in UAE to transportation and meals as well as ensuring you enjoy the diversity of activities available in the UAE. Whether you want to enjoy the sights and sounds or explore the rich heritage.



## Enterprise Culture:

A Taste of an Extraordinary Sensory Journey.  
The strategy is customer value, culture is behavior.

**Vision:** Develop the tourism market resource and become the first high-end brand in the UAE.

**Philosophy:** To provide innovative tourism service and achieve satisfaction with our profession.

## Corporate & Retail Travel Management

Regal Assets Tourism LLC corporate travel services can be adapted to ensure your every requirement is fulfilled and even exceeded. With our commitment to tailored solutions and exceptional services, get maximum return on your business travel investment.

Regal Assets Tourism LLC provides services to individual travelers based on their requirements. These include airline and hotel booking, visa assistance, travel insurance, tours, and transportation, among others.



REGAL ASSETS TOURSIM, LLC

## Advantages

### **Strong resource integrity ability:**

We have high-end vehicles and signed a direct cooperation contract with high-end hotels as well as suppliers in UAE, the self-ticket system in the scenic pots cannot only provide customized tourism but also perfectly provide solutions.

### **Senior operation team:**

We have rich industry experience and local living background in our team, they have fast response-ability to deal with emergency issues so that they cannot only know the local scenery and the routes but also the characters and their demands from Chinese tourists.

### **Professional tour guide team:**

We have got a tour guide who has been well-trained and lived there for a long time, they don't only know the local scenic sports and the local customs and practices, but also something that only the local people can know, which can promote the depth and breadth of travel for customers.

### **Forever high-end quality:**

We pay attention to service experience and provide service following the highest standard till the end, we're focusing to provide unique routes and high-end service.





REGAL ASSETS TOURSIM, LLC

## Service Character

### **Complete service flow:**

We pursue the perfect customer experience from the quotation to the successful business, to the feedback of the end of the travel with our complete service flow and system.

### **The value of details:**

We provide project stewardship for every customer and arrange all details accurately and flexibly to ensure the seamless connection of itinerary.

### **Measured response time:**

We can send a quotation within 2 hours and respond to customer's queries and requests quickly, also propose solutions to problems during the trip and implement timely.

### **Worry-free:**

At the same time of customizing the travel plan, we advance all kinds of emergency plans, according to experience, so that customers can enjoy a carefree trip.





## Services

---

### Exciting Tourism's Goals

- ◆ Provide full quality and luxury ground travel services within the UAE.
- ◆ Provide full useful Sightseeing information about local attractions, and especially culture.
- ◆ Provide exciting itineraries and personalized tours based on clients' schedules and interests.
- ◆ VIP treatment specialists.
- ◆ Provide a wide range of the best accommodation: 3star, 4star, 5star, Hotel Apartments with international standards.





## FIT Travel Services:

---

- ◆ **Hotel:** We have directly contact with over 300 hotels in UAE which can meet all kinds of budget.
- ◆ **Transportation:** 30/35/50-Seater Coach, Luxury Mercedes Sprinter, 7-Seater Business Car, 7-Seater SUV.
- ◆ **Guide Service:** Professional licensed tour guide with over 5-year-old experience.
- ◆ **Excursions:** We offer tourist packages to several places in Dubai: safari tours, sea adventures, city tours, dhow cruises, etc.
- ◆ **Attractions:** We have a direct booking portal with theme parks and other attractions. The tickets issue is efficient and convenient.





## Group Travel Services

---

- ◆ **High-end travel:** Our professional team knows customers' demands fully and make unique travel plans for them. Customer doesn't need to turn to other places since we can provide services that can go depth to the destination with perfection on each detail.
- ◆ **Business tour:** We can provide business trip resources for each field and arrangements, so that delegation can cherish the fleeting opportunities for cooperation in such a short visit.
- ◆ **MICE groups:** We have comprehensive resources of the awards, hotels, dinners, dancing projects, etc. with rich experience of convention and exhibition team operation. We are professional, efficient, safe and orderly to maximize team.
- ◆ **Boutique group:** We have fewer people in the team so that we can provide high flexibility and privacy to focus on travel quality and comfort. We only choose the features that are worth experiencing to experience the local lifestyle in depth.
- ◆ **Theme tours:** Well-selected topics of resources suitable for various themes, the special theme travel plans, including parents and children, honeymoon, exploration, self-driving, golf, etc. are prepared to meet the various needs of different customers.
- ◆ **Series groups:** The same classic scenic spots, but different service quality. We focus on in-depth experience and combine the better quality with lower price.





REGAL ASSETS GROUP HOLDING, LTD.

## **VIP Service**

VIP treatment is always a welcome treat. With us, you have the option to choose a hassle-free service fit for a true VIP. Our dedicated and well-trained staff will take care of all your travel needs, including all airport procedures, while you unwind at the VIP lounge.

Our VIP Services can be extended to cover the entire duration of your trip, from arranging your exclusive chauffeur to ensuring that you get only top-of-the-line luxury vehicles.



REGAL ASSETS GROUP HOLDING, LTD.

**Tailor Made**

Luxury Tailor Made Travel means seeing the world exactly how you want to see it, on an itinerary fashioned for you by the world's foremost experts.

Luxury Tailor Made Travel allows you to experience, from arrival to departure, every detail is anticipated and every effort made to ensure a seamless, unforgettable travel experience.





*Regal Assets Tourism, LLC.*

Office: 1004, Empire Heights Tower B,  
Business Bay, Dubai, UAE

Info@RegalTrip.com  
www.RegalTrip.com



RENT A CAR





ABOUT

## **Regal Assets Rent A Car, LLC.**

---



The company provides comprehensive services for premium class cars luxury rentals, car leasing solutions as an alternative to owning and maintaining vehicles to corporate and customers in the United Arab Emirates. We provide a wide selection of comfortable, elegant cars and top-quality service for private, business local and overseas clients.

Car hire process at Regal Assets Rent a Car LLC is simple, quick and convenient. We target travelers, eager to value their time and comfort. The main concept of the service is about booking a car in a fast and simple way with minimum proceedings – just a few documents to produce, no queuing and no waiting. It takes 3 minutes at most to book a car from Regal Assets Rent a Car LLC. You pick a car you like on the website, fill in your details, and pay online with a credit card. We guarantee our customers that they will get the very car they have chosen by its photo, description or features specified in Regal Assets Rent a Car LLC online catalog. Regal Assets Rent a Car LLC offers its customers not only short-term but also long-term rental service. We have a wide range of selection of cars such as economic, mid-size and luxury such brands as Ferrari, Lamborghini, Brabus, Lexus, Mercedes-Benz, Toyota, Hyundai, Nissan, etc.

REGAL ASSETS RENT A CAR, LLC.

## Mission

To be competitive with high-quality services, exceeding customer expectations by providing customized transport solutions. Regal Assets Rent a car will adopt the best technology solutions serving the needs of customers, catering for the economy, luxury, and commercial needs, while maintaining satisfaction across the value chain from customers to our people and throughout stakeholders.

Our mission is to provide satisfaction and comfort to the Client who hires a car from us. Quickly, hassle-free and with top quality – hiring a car from our car rental takes only several minutes. Safely, trouble-free and promote quality of service to enhance competitiveness.

## Vision

“To be the most preferred transport solution provider in the regions we operate in.”  
We devote ourselves to promote a friendly, secured and safe transportation services for the clients, and build trust and confidence to meet the excellence services.





## Objectives

---

- ◆ We are a Customer-centric organization and consider this essential for our success. We listen to our customers; provide them superior service exceeding their expectations. Thus, earning their trust, respect, and confidence.
- ◆ We are a cohesive team. We believe in collaboration, pro-activeness, professionalism, investing in our people, technology, quality, continuous learning, and improvement.
- ◆ We believe in Innovation. We empower our people to be creative, listen to them and reward.
- ◆ We are guided by ethical principles. We are committed to being open, honest, reliable and respectful in our dealings with our people and stakeholders.
- ◆ We value our Stakeholders. We have transparent interactivity with the stakeholders, ensuring mutual success and fulfillment of our mission.
- ◆ We honor our commitment to Society. We recognize the responsibility and opportunity to contribute to society to make a meaningful difference.
- ◆ We communicate a world-class brand image. We ensure effective corporate visibility.
- ◆ We have the trust of the Shareholders. We are committed to delivering a healthy return on investment and wealth generation.

## Values

---

- ◆ Transparency & Integrity
- ◆ Customer Service
- ◆ Quality
- ◆ Creativity & Innovation
- ◆ Value-adding

Mercedes-Benz Luxury Sprinter 10,13,16 & 19 seater Black & White

Mercedes Benz Brabus

Mercedes Benz V Class, Smart Brabus

Hyundai Tucson, Hyundai Sonata Brand New Model

Hyundai Accent Brand New Model, Toyota Camry Brand New Model

Toyota Corolla Brand New Model







*Regal Assets Rent A Car, LLC.*

Danat Al Mamzar BLDG office number 10B Hor  
Al Anz East (UAE)  
Dubai, United Arab Emirates

Info@Regalrac.com  
www.Regalrac.com





VERTICLE  
FARMING





ABOUT

## Fujian YDJ Light Co., Ltd China

---



Food, land, environment and life quality is constrained by each other, and it is difficult to develop them harmoniously. For example, to increase grain output, we have to expand the cultivated land and use a lot of chemical fertilizers and pesticides, resulting in environmental degradation, resource reduction and serious food security problems.

### **What is an artificial light plant factory?**

Artificial light plant factory is based on soilless cultivation technology, by photobiology, mineral nutrition, and climate environment control technology and other modern technology means to optimize the environment of the growth of plants. By these approaches, the plant growth process is not affected by the natural growing environment, realizing the industrialization of the plant's growth process and continuous high growth.





### **The features of vertical layered planting and controlled environment**

- Increase food production without expanding cultivated land and damaging the environment.
- Insect-free, disease-free and pollution-free.
- Plant growth process is not affected by natural climate, realizing continuous industrialized planting and planned planting according to demand.

### **Soilless cultivation**

In the conventional planting method, soil can store mineral nutrients, hold water, keep the roots warm, and fixing the plants. Soilless culture, to use a utensil to fix the plants, and ensure the mineral nutrients, moisture, insulation and ventilation needed for plant growth by using environmental control techniques. Mineral elements are essential nutrients for plant growth which include carbon, hydrogen, oxygen, nitrogen, phosphorus, potassium, calcium, magnesium, sulfur, iron, manganese, copper, zinc, boron, molybdenum, nickel, chloride.

### **Cultivation without sunlight**

Light is the necessary energy for plant growth. Sunlight is a full spectrum of light. Different wavelength spectra have different photosynthetic efficiency for plants, and not all of the spectral energies of sunlight are required by plants, therefore, different plants require different spectral wavelengths for photosynthetic efficiency. For example, the color of plants is green, indicating that plants do not absorb energy from the green spectrum of sunlight.

### **Cultivation without the natural environment**

- The optimum temperature for plants is 20–30°C.
- The optimum humidity for plants is 60-90%.
- The optimum carbon dioxide concentration for plants is 800-1000ppm;
- Insect-free, disease-free and pollution-free.





*The features of automated planning system*

## **Automatic planting equipment**

---

### **Integral layered structure**

The width length and height of each layered unit can be extended continuously. There are no aisles between shelves.

### **Closed environment**

Set up a closed environment in the space where plants grow to separate people.

### **Automation**

Plants can only be planted and harvested from the window set in the closed environment space, and the movement during the plant growth process on the shelf is all automated.



*Integral layered structure*



*Distributed layered structure*

## High-efficiency farming

**The average efficiency is about 1.3 times higher than the ordinary technology planting method.**

In ordinary technology, the shelves are arranged in a distributed manner, with aisles between the shelves, either manual or mechanical. The area of aisles is about one-third of the total area.

### High in energy utilization efficiency

In ordinary technology, people and plants are in the same space, which requires large space volume and consumes large energy to control the factory.

### High working efficiency

The movement in the growth process is fully automated, compared with ordinary technology, which requires manual or mechanical movement of plants on the shelf, it greatly decreases labor costs.

### Automatic planting

The movement in the process of planting and environmental factors for plant growth is controlled by computers.

### Scale cultivation

Layers of automation equipment can be built on many levels. For example, a plant factory covering 6,000 square meters can produce 100,000 square meters of cultivated area.





### 1. Cultivation method:

We apply a hydroponic immersion method to produce best.

### 2. Equipment specification parameters

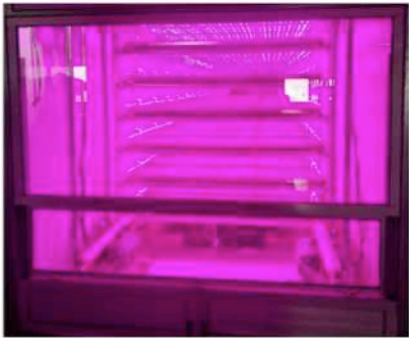
Specification of monolayer	width 2200 Width 1300
Length of equipment	$M \times 1300 + 2000$ (M is the number of length units)
Width of equipment	$P \times 2100 + 600$ (P is the number of width units)
Height of equipment	$H \times N + 1500$ (N is number of layers, H is height between layers, set as 250-500 according to different plants.
Cultivation area of monolayer unit	2.16 sqm
Distribution power	200W/ sqm of cultivated area

### 3. Environmental parameters

The movement cycle of lettuce	3 minutes
Growth cycle (12H of light)	40-50 days from sowing to harvest (seeding stage 20-35 days)
Variety of lettuce	Luya、Ziya、Gelin、Lvluoma、Ziyan、Lvdi、Kuju、
Output	Around 2.5~4 kg/ sqm of cultivated area



*Distributed  
layered  
structure*



*Automatic  
planting  
equipment  
(around 13.332  
meters)*



*Automatic planting  
equipment 536  
(M=5,P=3,N=6)*

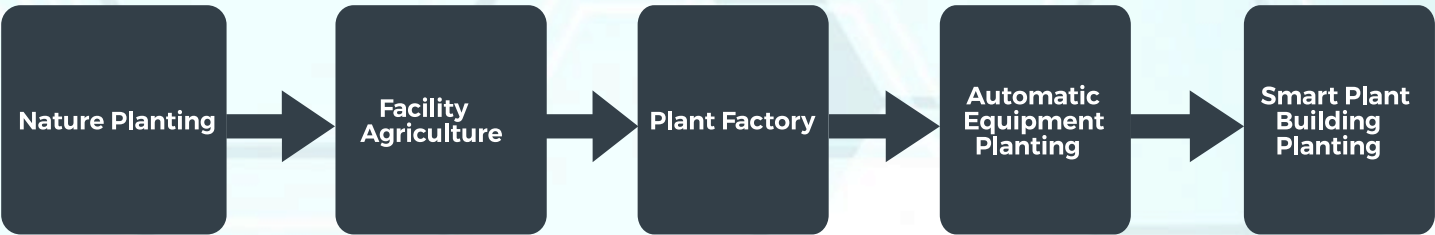


*Automatic planting  
equipment 966  
(M=9,P=6,N=6)*

#### 4. Lettuce planting parameters

Optical parameter	PPFD≥200umol/m2/s
	R/B=5-6 (can be specified by the customer)
Nutrient formulation	See the formula table
Temperature	20-30℃
Humidity	≥80%
Concentrations of carbon dioxide	800–1000ppm

### The development of the plant cultivation







## Vision

---

- ◆ Plant factory technology and biotechnology are the two major agricultural technologies of the future.
- ◆ With plant factories, cities will be surrounded by vegetation and forests, instead of vegetable fields.
- ◆ With plant factories, will a man need to look to the outer space?



HEALTH CARE





ABOUT

## **Legacy Prime Holding Co. Ltd.** **Thailand**

---



**LEGACY PRIME**

A close-up photograph of several green cannabis leaves. The leaves are serrated and have a prominent vein structure. They are set against a dark, blurred background, making the green leaves stand out. The lighting is soft, highlighting the texture of the leaves.

# **LEGACY PRIME HOLDING**

**Bangkok, Thailand**

Since Thailand is the first country in Asia that has approved of the use of Cannabis plants for Medicinal uses; by the Medical Marijuana Legislative Assembly (NLA). The Narcotic Acts changes become law and have been published in the Royal Thai Government gazette. The lifting of restrictions includes Plantation, Production, import, export, possession, and use.

Legacy Prime (Thailand) Company Limited, was established in 2019 with the lead investor: Regal Asset Holding Asia Limited. We focus on the business sector of Cannabis Investment covering: Seeding, Plantation, Medical Research, Manufacturing, Import & Export.

We aim to set up a Joint Venture with eligible Government Organizations, Bureaus, and Ministries, including the "Department and Local Administration" to acquire the license to trade and market in Thailand, Japan and Korea, UK and Europe.



## Products

The purified form of THC and CBD for medicinal use would be the new organic medical solution for people's health. In Thailand, THC and CBD are planned to be the key solution to reduce the Country's cost of importing medicine. There is a high demand for THC and CBD of around 100,000 to 1,000,000 patients in Thailand.

This also has the potential of producing other alkaloids, such as CBA CBN, which are effective for future medicinal uses.

To lead the whole market & ecosystem of Thailand, we will use the most advanced & latest technology for CBD, CBA, CBN, and other alkaloids extraction system which could remove the toxic pesticides innovation. data 2019.



### The Explosive Growth of Legal Adult Use and Medical Marijuana Markets



Source: [www.womenscannabischamberofcommerce.com/arcview](http://www.womenscannabischamberofcommerce.com/arcview)

## Market

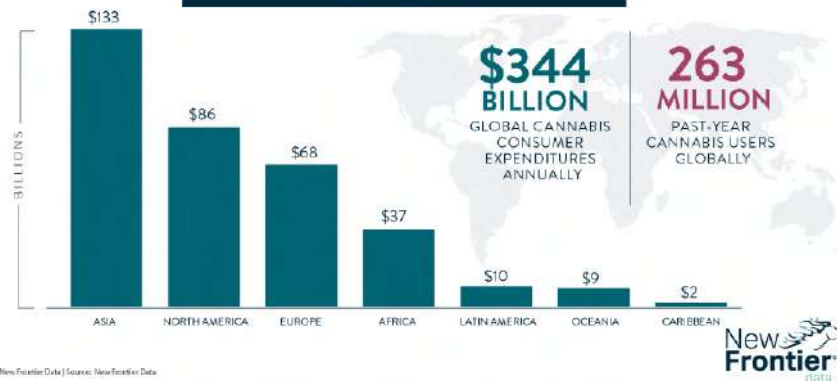
The World's market for this is large and growing: including medical as well as legal recreational products. The market is expected to generate up to \$22.8 billion in total sales in 2020 and is aimed to reach \$57 billion in 2027 with the compound annual growth rate of 31%.

For more insight, while the growth of the cannabis market is expected to be fast, Asia is the top of the biggest market of all the regions with up to \$133 billion or 38% of the total Cannabis world's market reportedly by New Frontier data 2019.

CannaBit

GLOBAL CANNABIS CONSUMER MARKET VALUE  
(2018 ESTIMATE)

FOR MORE INSIGHTS  
LIKE THIS, VISIT:  
[NEWFRONTIERDATA.COM](http://NEWFRONTIERDATA.COM)



© 2019 New Frontier Data | Sources: New Frontier Data

Source: [www.newfrontierdata.com/marijuana-insights/global-cannabis-market](http://www.newfrontierdata.com/marijuana-insights/global-cannabis-market)

## Conclusion

Our goal is not only farming and research. We also aim to supply reliable and advanced cannabis life solutions to Government agencies, Hospitals, other services, and regular consumers. Our company is also focused on improving the quality of living for southeast Asia citizens starting from Thailand by practically improving all aspects of the economy and society.



## **Co-Operative Strategy**

We aim to co-operate as a B2G by joining with the government sectors to operate & scale the edge of the market landscape.

To build a sustainable foundation of Cannabis in South East Asia, we believe that the key is to create a whole ecosystem of the Cannabis Industry. It is important to understand not only demand, the supply, the advancement of technology, but also the scientific understanding of Cannabis that need to be developed to a standard in each region and country.

By cooperating with the Government, not only brings big opportunities for business but also opportunities to increase the scale of the Cannabis Industry's Ecosystem as well.

Our Vision is to see Legacy Prime Holding and Government Sectors developing the market of Cannabis and scale up the market together as well as improving the sustainable future of the people's wellbeing economically and socially.

### **Our strategic partners:**

#### **Chulalongkorn University**

A World-class National University 102 years of education and research to serve the nation with dignity and integrity. It is the Top University in Thailand and Thailand's first institution of higher science learning.

#### **Thai Army Research and Development Office**

47 years. The Thai Army Research and Development Office served to focus on technology-for-country research and development. This was not only for military use but also for society.

#### **ABH: Abhaibhubejhr Herb Organization**

Thailand's herbal medicine. The Chao Phya Abhaibhubejhr Hospital Foundation focuses on attaining government-sponsored development into the key flagship of Thailand's 4.0 strategy to develop a "Herb City" that will encompass an enclosed community of health.





### **Advanced Research Development**

Leading by Dr. Atapol Sughondhabirrom, M.D. King Chulalongkorn Memorial Hospital.

### **More than 30 years of medical research development**

who specialized in Cannabis and other alkaloids research with Postdoctoral research fellow (Yale University School of Medicine, USA).

### **Strategic Planning Development**

Leading by Apiwat Fuangfoo.

### **Top strategy consultant of global firms in Thailand**

Who specialized in the Business and Marketing Strategy, consulting in various industries to global firms such as Honda, AGC, MUFG-Krungsri Bank, etc.

ABOUT  
**Ameri Asia**  
Thailand

---



**AMERI ASIA**

**Our Vision**

To invent the INNOVATION- LED HOSPITAL & HEALTHCARE ECOSYSTEM that move people forward to the next era of healthy life and happiness.

**Our Mission**

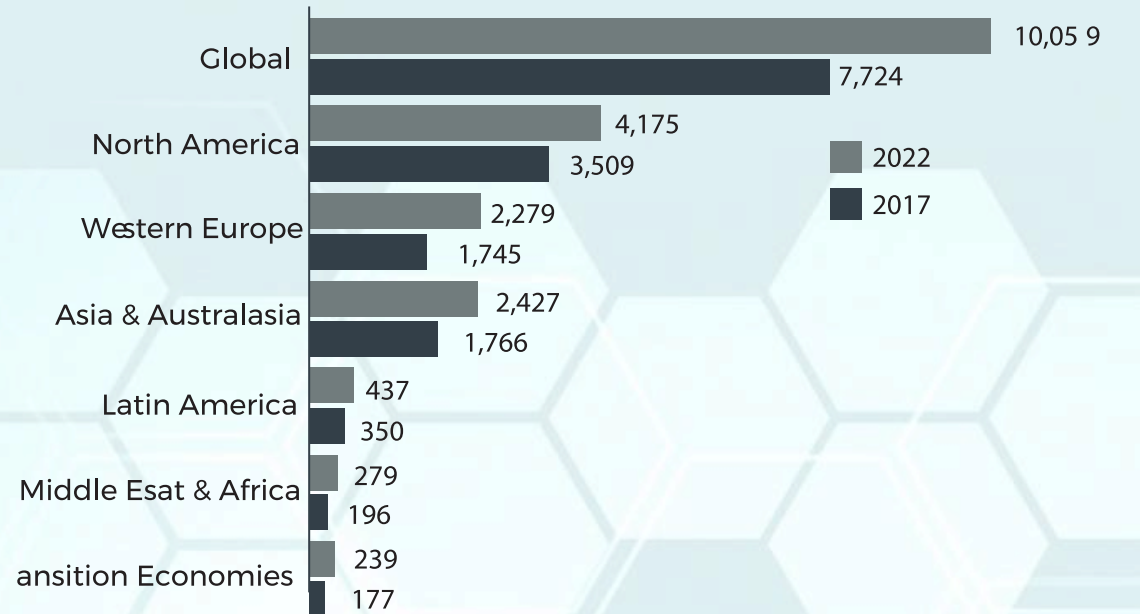
ASIA'S NO.1 HOSPITAL-TECH BY 2024  
The next Silicon Valley of Hospital

**Growth Plan**

Four phases  
Cancer center hospital 40~50 beds  
ASIA'S first hospital-tech 150-200 beds  
Rehabilitation center & resort  
ASIA'S most innovative hospital-tech  
400-500 beds



## Asia will surpass western Europe and became No.2



## Healthcare Future

The Global healthcare market is projected to reach USD 11 Trillion by 2020.

### Aging Population

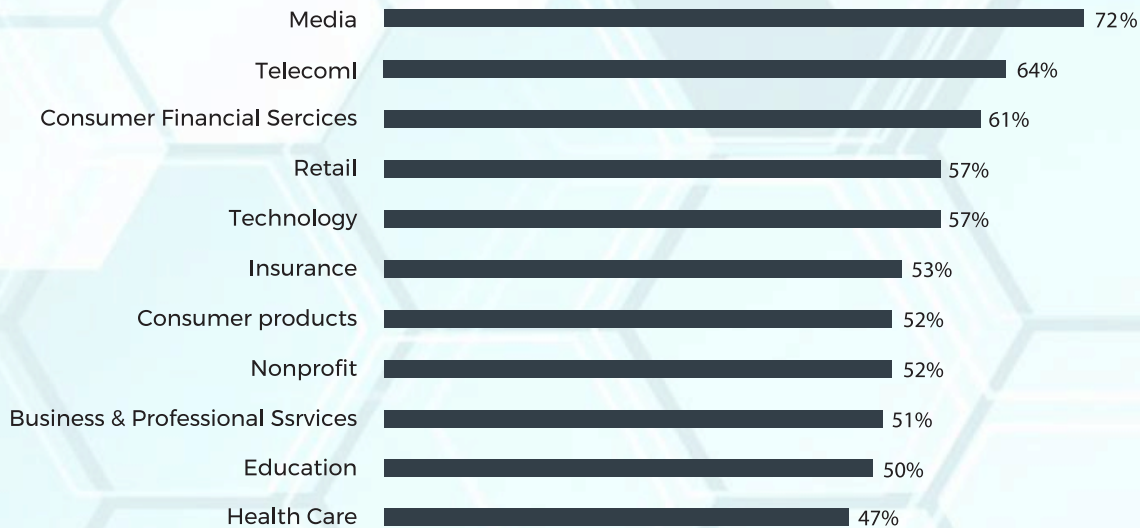
Thailand and China will be the 3rd and 4th rapidly aging countries in Asia.

### The Rise of Middle Class

Asia will represent 2/3 of global middle-class population by 2030.

### Technology Advance

Advanced clinical technology in the Transition.  
The Industries that are Being Disrupted the Most.



*Healthcare is the industry that has a biggest room for innovative disruption.*



### **Specialization**

1. Cannabis & CBD Know-How
2. Agri-tech for consistent high-quality
3. Monography-tech for paraquat-free cannabis
4. Medical-tech with cancer specialization

### **Alliance**

Top University Alliance: Create a strong alliance and support research fund to Chulalongkorn University. NO.1 national University and institution of higher science learning.

### **Customer Base**

Available prospects: Large amounts of potential customers available. Thailand is the leader in ASEAN Medical Tourism.





**BLOCKCHAIN  
TECHNOLOGY**



ABOUT

# Future Currency Group Pty. Ltd (FCG)

Australia

---



The Future Currency Group Pty Ltd (FCG) is an Australian proprietary limited company that is focused on developing and exploiting Blockchain technology. The ultimate aim is to develop a regulated 'Blockchain superhighway' which can accommodate a Blockchain technology.

**The preliminary objectives of FCG are:**

To engage the academic community, industry partners and stakeholders to address the critical challenges confronting the development of the Blockchain technology.

Establish a virtual currency base that leverages existing value benchmarks and provides a seamless interface with fiat currency systems.





## The FCG Initiative

At its core, the FCG seeks to transform the global economy by initiating fundamental changes in the way people engage in exchange. FCG believes this can be achieved through the conduit of the internet and Blockchain technology.

Exchange is at the core of all social interaction. By adopting Blockchain virtual currency systems as the primary means of exchange, FCG believes that a transformation is effected which will change the financial system as we know it and open the doorway to an integrative Blockchain ecology. This will lead to vast improvement to the efficiency of capital allocations, significantly reduce transaction and financing costs and provide access to the financial system to the unbanked with the foregoing in mind, the FCG has four main objectives:

- ◆ Establish a lead supranational organization for development and establishment of rules, governance, technical protocols and regulations across jurisdictions. It is envisaged that this organization will bring together key stakeholders including academics, government, regulators, industry partners, and stakeholders. (We refer to this organization as the international council for the virtual economy (ICVE)).
- ◆ Development of the 'Blockchain superhighway' which FCG envisages will be a unified Blockchain infrastructure that will enable the development of a truly integrated Blockchain ecology. It is further envisaged that the Blockchain Superhighway will be regulated by the ICVE.
- ◆ Development of a concerted movement in the academic and technical community to solve the challenges and address the impediments to be resolved before Blockchain can rightfully take its place as a viable technology.
- ◆ Development of technical and commercial systems for the promotion of a regulated and value referenced virtual currency and the Blockchain technology.

ABOUT

# Co-operative Research Centre (CRC) Australia

---

FCG leading the initiative to establish a Co-operative Research Centre (CRC) for the Blockchain superhighway. The CRC is a commonwealth government funding program which provides access to the academic and industry partners to obtain government funding for research and development initiatives. The CRC for the Blockchain Superhighway seeks to raise to AUD 50,000,000 in private research funding and a further \$50,000,000 by way of government grant under the CRC program.

The Blockchain CRC is an initiative of FCG that fundamentally seeks to catalyze academia, regulators and industry around the core issues and challenges facing the broader adoption of Blockchain technology and its integration into domestic and international economies.

The Blockchain CRC will bring together participants from government, industry and research providers. The government will include Health, Education, Land Titles, Treasury, Human Services and Local Councils. The industry will include Banks and Financial Institutions, Health Funds, Mining and Resources, Transport and Logistics and Retail. Research Providers will include Universities and other research centers.



## CRC to develop

FCG is now working with other members of the Blockchain CRC to develop a submission for the program with it due to being lodged in February 2020. Academic and institutional partners include the Queensland University of Technology, Macquarie University, Australian National University, Royal Melbourne Institute of Technology, Swinburne University and data 61. A copy of the invitation to participate developed by the FCG in conjunction with the Queensland University of Technology and Macquarie University Sydney.

The purpose of the CRC is to identify the critical challenges affecting Blockchain and develop solutions an approach to the resolution the same. FCG aims to leverage the CRC to develop:

- ◆ To develop the roadmap for the development of a supranational organization to regulate and provide governance for the Blockchain ecology (ICVE);
- ◆ To develop a uniform technological infrastructure that will facilitate uniformity and interoperability (the Blockchain Superhighway);
- ◆ To develop technology and protocols around establishment of Blockchain identities (Blockchain avatars);
- ◆ To develop the technology, protocols, and procedures around regulated cryptocurrency systems: Superhighway CRC is well-positioned because it has strong support from these three spheres.

### The partners and participants:





## The International Council for the Virtual Economy Initiative (ICVE)

---

FCG aims to leverage the CRC to facilitate the development of a framework for the establishment of a national and supranational institution for the development, promotion, and regulation of Blockchain virtual currencies as the primary means of exchange and the development of the Blockchain ecology.

The primary objective of the International Council for the Virtual Economy (ICVE) is to develop a regulatory framework for virtual currencies and the virtual ecology that addresses the need for governments to have visibility over and regulate their citizen's currency transactions. The framework is intended to allow, and promote, competition amongst multiple currency Blockchain operators in an environment of regulatory and contractual certainty that facilitates low cost, scalable currency dealings and maximizes financial inclusion.

The ICVE will strive to be a contemporary benevolent foundation to facilitate global commerce in an increasingly virtual global economy.

It will aim to ensure the integrity, efficiency & effectiveness of an international framework to support custody, transfer & exchange of value using Blockchain technology through sound peak policy, strong governance & collaboration with supranational organizations, governments & industry.

It will aim to lead efforts to develop solutions to the emergent financial system and economic challenges, opportunities & risks and promote efficient and effective links between the financial and real economies.





To find out more about the FCG's ICVE initiative, visit our website at [www.icve.org](http://www.icve.org).

It is envisaged that the institution of the ICVE will include all key stakeholders, governments national and international, regulators, public and private enterprise.

The institution will:

- A. Establish and develop the regulatory framework;
- B. Develop rules and regulations, procedures and protocols;
- C. Develop a rating system for compliant virtual currencies and applications;
- D. Establish:
  - I. Reserve bank for the development of monetary policies.
  - II. Bank for creation of an interface between the virtual and real economies.

# ABOUT **BAXE** Australia

---



## Digital Gateway Platform

BAXE is the primary product developed by the Future Currency Group as a closed Digital Exchange that provides individuals and businesses with a secure, efficient and affordable means to conduct everyday commerce while ensuring the management of governance, integrity, and risk. BAXE will enable users to leverage a new world Blockchain ecology whilst maintaining fully integrated access to the real economy.

FCG is developing a user-friendly app (the “BAXE APP”) for mobile devices to create a central aggregation point for all matters financial, enabling the purchase of BAXE, transacting with BAXE, and the exchange of BAXE for fiat currency.

Security is assured through voice biometrics combined with additional identity cross-correlation. The BAXE APP offers a streamlined registration process. It provides step-wise access after registration based upon incremental KYC requirements and will automatically retrieve data from scanned identity documents.

FCG has also commenced negotiations with a partner Bank who will facilitate the issuing of a Debit Card and will sit behind the Currency Exchange to ensure the BAXE can be seamlessly exchanged for Fiat currency.





## **Key features of BAXE are as follows:**

---

BAXE Digital Tokens will be asset-backed by a basket of fiat currencies, enabling the BAXE Exchange to set rates and enables currency conversion to be handled seamlessly. The value is stabilized and linked to existing fiat exchange rates. BAXE is not a speculative digital currency but rather a transactional alternative allowing customers to engage in everyday commerce.

- a. The BAXE Digital Token will retain real value as it will asset-backedd and pegged to a basket of fiat currencies.
- b. BAXE will be supported by a cryptocurrency exchange service.
- c. BAXE will also issue a market coin linked to the release of BAXE digital token. BAXE market coin will be tradable for other virtual currencies via the cryptocurrency exchange interface.
- d. BAXE will become the first commercial entrant to the internationally accepted framework of ICVE and the platform of Blockchain Superhighway.



BIOTECHNOLOGY



Shogetsu Biotechnology, Japan

Health Life

松月バイオテクノロジー

REDEFINING HEALTH PHILOSOPHY. CREATE A NEW ERA OF NOURISHING





ABOUT

# Shogetsu Biotechnology

Japan

---

Shogetsu biotechnology, japan, is committed to creating a global leading truffle brand. It advocates natural plant extracts and a quality attitude for perfection. Shogetsu is a high-tech biological company mainly engaged in health products and truffle products. Company has the most advanced truffle extraction technology in the world and scientific research assembly line. Which is a professional enterprise for production, sale, research, and development? Providing every identifier with meticulous care and service is the original will of development of Shogetsu Biotechnology.

Shogetsu Biotechnology selects the best truffles as raw materials and develops several significant health products. It is committed to bringing consumers an impressive truffles experience.

Compared with other traditional ways of eating truffles, Shogetsu Biotechnology extracts truffle and designs the products into oral liquids that are more easily absorbed. The truffle oral liquid is exclusively developed by Shogetsu Biotechnology, with excellent health care performance and has been highly sought after by many consumers for a long time. The oral solution has been well certified by the authority. Safety, health , and nature are symbolic characteristics of Shogetsu Biotechnology.

Today, Shogetsu Biotechnology offers not just products, but services and responsibilities. In addition to efficient and excellent products, Shogetsu Biotechnology also provides relevant health services for customers through exquisite and thoughtful after-sales service. We firmly believe that we will continue to seek more miracles of life in the future. Shogetsu Biotechnology constantly strives for excellence in quality and create the future.



### **The advantage of truffle**

Europeans rank truffles with caviar and foie gras among the world's top three dishes. Truffles are valued for their aroma, and black diamond truffle is even hailed as the taste of heaven. Only a small bottle of it every day, you will feel the value of every drop plays to the utmost in your body. By longtime usage, it shows a better effect. Its distinctive aroma has fascinated people since ancient times, and there is still no substitute so far for the truffle taste.

### **Impressive effects**

1. Cancer prevention.
2. Anti-aging prolongs the life.
3. Polysaccharides can effectively regulate immunity, prevent tumors and fight fatigue.
4. A polypeptide can help to run out the toxins, nourish lungs and kidneys, supply balanced nutrition, regulate 8 systems of the human body and improve immunity.

### **Rigorous Process**

1. The long growth process of truffle for 3~5 years.
2. 120 rigorous and luxurious processes.
3. More than 290 safety tests to strictly manage quality.





### **Selected natural truffle**

As one of the world's top three dishes, truffles have not been cultivated so far and can only be harvested in the corresponding seasons. The truffles Shogetsu carefully chose, are high in protein, amino acid, and other nutrients. Thus, they have the function of improving immunity, anti-cancer, anti-tumor, treating diabetes and cardiovascular disease, anti-aging, protecting the stomach and liver and so on.

### **Natural extractive herbal essences**

A bottle of truffle oral solution every day, to make your body full of vitality from inside to outside.

### **Biological wall-breaking technology**

1. Total 36 safety checks for more than 290 ingredients.
2. Adhering European techniques that have come down 100 years.
3. Biotechnology breaking-wall techniques.
4. Vacuum Aseptic Packaging.
5. Advanced scientific research equipment from Germany and Japan.
6. Automatic packaging line and quality control inspection equipment.

### **Scientific nutrition ratio**

It is rich in proteins, 18 kinds of amino acids, unsaturated fatty acids, various vitamins, and essential trace elements, and it also contains a large number of metabolites such as sphingolipids, cerebroside, ceramides, triterpenes, androsterone, adenosine, truffle acids, sterols, truffle polysaccharides, and truffle polypeptides.

## Comparison of scientific experiments

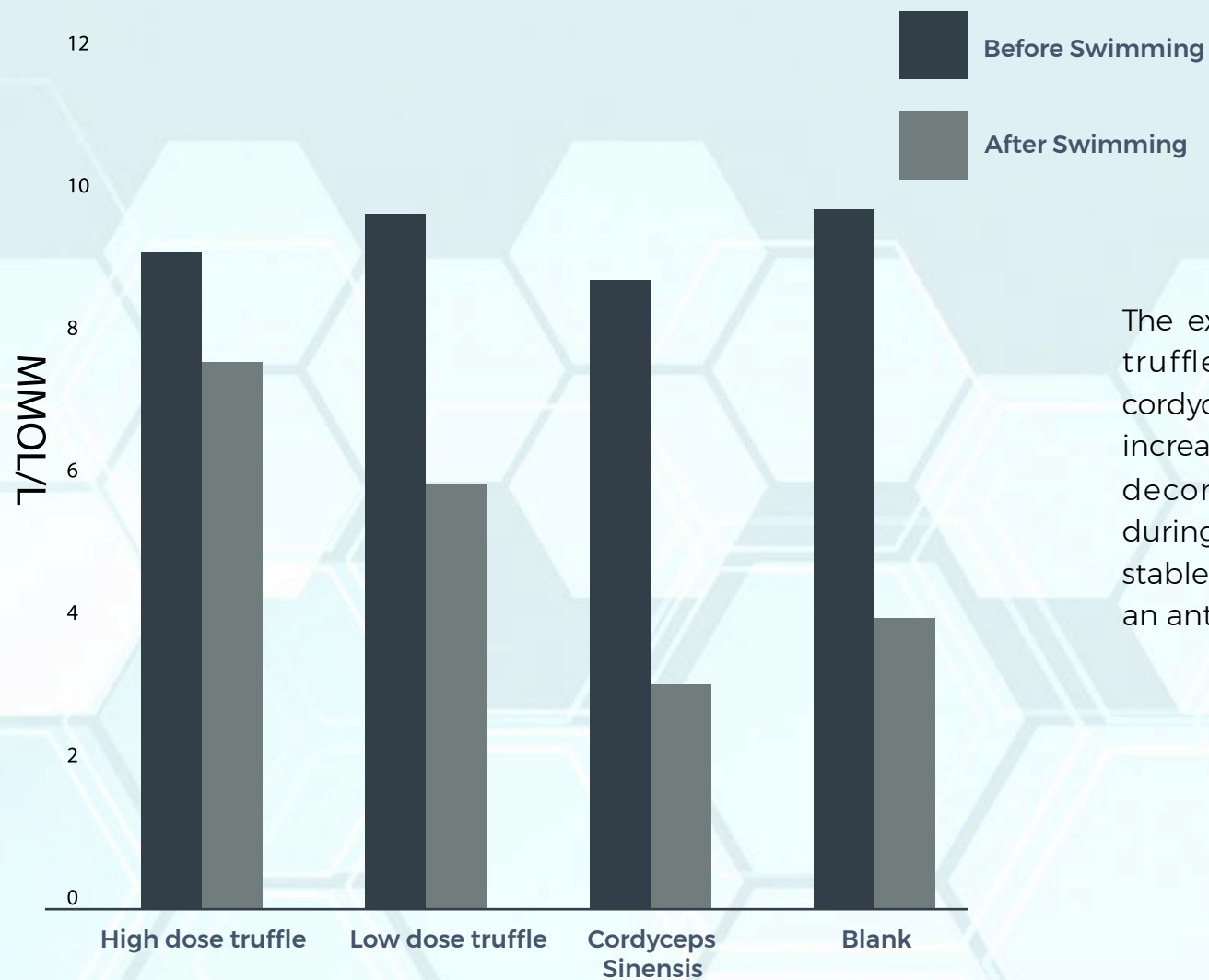
The experimental photos above visually show that for the first time in human history, two animals with identical genetic backgrounds (the equivalent of human identical twin brothers/sisters) aged at very different rates after a simple external intervention: the rat is agile with sleek hair after 3 months of taking our products, while the other one is sluggish with dull hair.



Groups	MBG before swimming (MMOL/L)	MBG after swimming (MMOL/L)	Difference value (MMOL/L)
High dose truffle group	9.64	7.93	1.71
Low dose truffle group	9.9	6	3.9
Cordyceps sinensis group	9.22	2.84	6.38
Blank group	10.08	3.68	6.4

*Specific measurement results of Mean Blood Glucose (MBG)*





The experimental results show that truffle has better effects than cordyceps Sinensis. It could not only increase glycogen reserve, but also decompose and supply energy during exercise, maintain relatively stable blood glucose level, and have an anti-fatigue effect.



## Scarce Resource Worldwide

### Filler of market gaps

This is the first truffle health products with maintaining in the market, which can provide the skin and body intensive care. Our products can help to activate genes and recover young genes synthesis.

### High Health Value

Focus on tailoring products for busy modern people. We have a group of professional R&D team to ensure the quality of each bottle of solution. Besides, we make sure that all of our products are extracted from nature truffle, tasty and nutritious.

### Advanced Production Technology

We have years of scientific research experience, advanced technical equipment, international automatic filling line, high-temperature heating, food-grade glass bottling line, so the quality can be guaranteed. There are also a variety of products, packaging, specifications, formula and assembly lines, to meet the different needs.



## R&D and Production Process



### **Processed with selected raw materials:**

More than 20 kinds of rare medicinal materials and high-quality truffles selected strictly according to relevant physiologic index.

### **Extraction and Concentration**

Supercritical low-temperature extraction ensures bioactivity of hygienically component.



### **Make it Creamy and Dosing**

There are several luxury processes operating in a fully enclosed workshop to make it creamy.



### **Sterilization and Filling**

High-temperature heating & automatic filling line.



### **Packing and Storage**

Vacuum Aseptic Packaging.

### **Beginner's Mind**

With the number of people in the state of sub-health growing, there are more and more people are suffering from chronic and recessive disease. Since people are paying more attention to health issues, Shogetsu starts to research into truffle with years of accumulated clinical experience to bringing people these mysterious health products from nature. With a combination of nature and technology, to wake healthy skin magically.

### **Outstanding Quality**

This product is a collection of 20 kinds of Chinese herbal medicine. In order to repair the damaged body barrier, increase immunity, and improve sub-health symptoms, shogetsu produces this oral liquid by selecting the world's top materials and using Japanese scientific research and sophisticated equipment during the production of the solution.

It can not only treat diabetes, prevent senile dementia and atherosclerosis, but also have the effect of anti-aging, reducing wrinkles, and enhancing skin elasticity. It even has the excellent effect of anti-tumor and protecting liver cells for long-time use. Because of its unique efficacy, super permeability and efficient absorption, it has become the best choice for many people who pay attention to life quality and health.



#### **Value for Men:**

- it can significantly increase resistance to seasonal and influenza symptoms of the human body if taking regularly.
- it can improve sleep quality, and symptoms such as anergia, fatigue, back pain, insomnia and dreamful sleep, physical decline, dim complexion, upset chest, poor appetite, and other phenomena if taking regularly.
- It can significantly improve the phenomenon of frequent urination, urgent urination, weak urination, and abdominal distension if taking regularly.
- It can significantly improve the phenomenon of a decrease in sexuality.

#### **Value for Men:**

- It can significantly increase resistance to seasonal and influenza symptoms of the human body if taking regularly.
- It can improve sleep quality, and symptoms such as anergia, fatigue, back pain, insomnia and dreamful sleep, physical decline, dim complexion, upset chest, poor appetite, and other phenomena if taking regularly.
- It can significantly improve the phenomenon of frequent urination, urgent urination, weak urination, and abdominal distension if taking regularly.
- It can significantly improve the phenomenon of a decrease in sexuality.



VIP &  
LUXURY YACHT





ABOUT  
**Azure Yacht**  
Italy

---



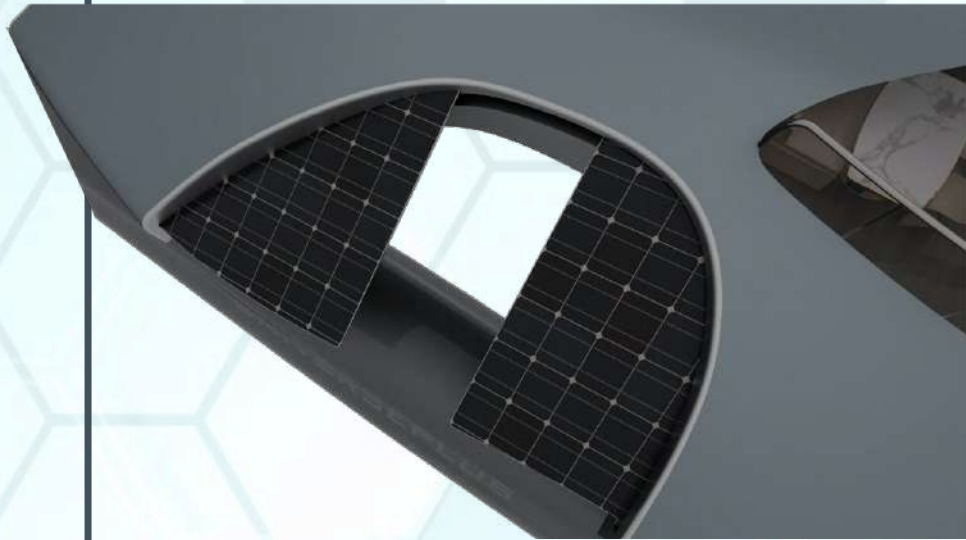
AZURE means sky blue, and now it is endowed with a new meaning. We are going to interpret it extraordinarily on the ocean. AZURE, is just the name for the new yacht we are developing in Italy.

This yacht will apply the most advanced solar technology as the power and endurance energy of the hull, which allows it to travel around the world without docking at any port for a supplement.

we are committed to researching and developing high-tech products with sophisticated and professional technology in the process of designing a solar yacht. Gradually we will make the transition from solar hybrid power to solar-powered.



**AZURE, born out of a passion for vision and excellence. We are committed to infusing our insistence to quality and innovation.**



*As shown in the figure, the solar panel is stretched.*

## The research parts mainly include:

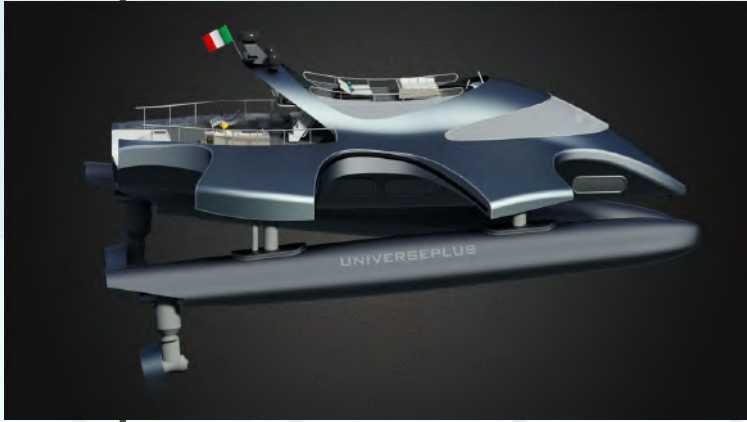
The hull is effectively covered by efficient and high strength silicon substrates solar panels. The monocrystalline silicon solar panels are combined with the yacht power system to transform solar energy into electrical power effectively.

The high-density lithium-ion battery ensures the power supply of yacht navigation and other needs. The nonlinear charge and discharge increase the stability of the output of the battery.

In extreme weather, we use the yacht energy storage device to output electrical energy to the power system to ensure uninterrupted navigation.

Because of its characteristics of energy conservation and environmental protection, the solar yacht industry is supported by the governments vigorously. Besides, hybrid powers ensure the safety of the yacht, while the intelligent control system reduces the complexity of the operation. Also, we effectively increase the navigation mileage as far as possible when ensuring passengers comfort, and fashion appearance design. All of them greatly increased the foresightedness and innovation of the solar yacht industry.





## Stable Technology

In terms of stability, we will apply the new hull suspension technology and gyroscopic stabilization technology as the support to maintain the stability of the hull. So even in a rough sea, the passengers in the cabin can still enjoy a cup of coffee or champagne.

Our main stabilizing technique for our multi-hull ships is the hydraulic suspension system. The system separates the hull from the superstructure so that the wave-induced wobble is adequately cushioned in the lower layers without transferring the force and acceleration of the hull to the deck and superstructure. So no matter at rest or a high speed, the yacht still keeps in a state of comfort, control, and stability. Through active control of the suspension system to improve stability further and remain yacht horizontal. This has great potential applicability for commercial, military and recreational vessels.

As shown in the following figure, the pontoons on both sides can be automatically adjusted up and down with the wind and waves through the suspension mechanism, to ensure the stability of the upper cabin.

We always adhere to keep innovating the technical system, performance, modeling, and other aspects to make revolutionary progress in technology and manufacturing.

ABOUT  
**VIP Program (Azure)**  
Australia



We aim to develop a VIP program, Azure, that provides elite services to members. The initiative will focus on Chinese nationals and diaspora. Initially, we envisage uptake by our high net worth members.







## Services

---

The Services provided will predominately be focused on providing luxury to members in their everyday lives as well as whilst they are travelling. The main services this program will aim to arrange for members will be:

- ✓ Personal Assistant/Concierge services (which will include anything that a member may request to be organized or obtained on their behalf e.g. dining reservations, travel packages, tickets for various events, event planning, appointment/schedule management, daily errands, etc.).
- ✓ Reservations at 5 and 6-star hotels/resorts.
- ✓ Premium cabin air travel.
- ✓ Luxury charter (private plane, helicopter, boats, yachts).
- ✓ Limousine service, Luxury Vehicle hire.
- ✓ Michelin dining.
- ✓ Elite security services.
- ✓ Special events – symposia and conferences for networking opportunities  
– Annual Global leadership forum.
- ✓ Executive Venues or guilds.

## Membership Categories

The program will be comprised of the following membership tiers:

- ❖ Silver
- ❖ Gold
- ❖ Platinum and
- ❖ Platinum Elite (by invitation only)

Members will accumulate points and status credits. The Status will define the scope of services that the member has access to. Point accumulated will be redeemable for tangible rewards. Members will be entitled to redeem a reward on spending a certain amount of money and/or earning a certain amount of points. The Rewards are of course also available to be purchased.

## Status - tiers of service should be focused

- ❖ Extensiveness of support by Concierge;
- ❖ Access to security service levels;
- ❖ Access to special events, venues or guilds.

## Points Benefits will be focused on tangible redemption opportunities including:

- ❖ Luxury holidays, Ultra elite packages, etc.;
- ❖ Elite dining experiences;
- ❖ Extreme activities - i.e. Galactic One, ETC, Antarctica.

Members will have personal accounts accessible from the mobile app or website where they can submit service requests, make a payment, receive invoices, updates, etc.

Each member in the higher rank will have a Personal Manager appointed to them to be their point of contact so that they are only dealing with one person. The higher the status of the member the greater access to core services will be.





HOSPITALITY



ABOUT

# Angkor Royal Dynasty International Hotel and Resorts Cambodia

---

Angkor royal dynasty international hotel and resorts are located in Cambodia's most developed tourism Siem Reap District, with the best geographical advantages, combined with the historic Angkor dynasty cultural heritage and current fashion elements to create a comfortable hotel complex with a total area of about 250,000 square meters.







## Project Introduction

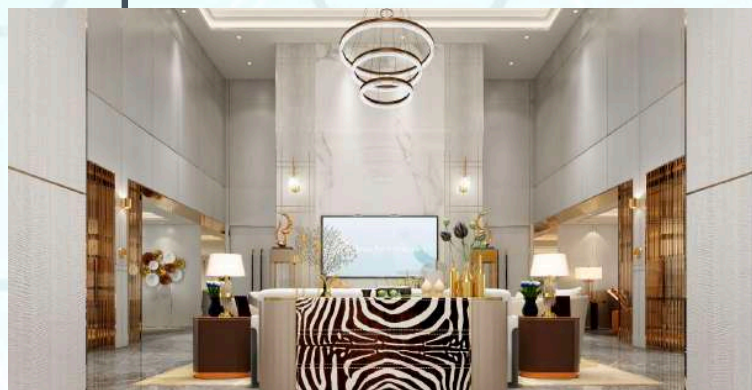
Outdoor landscape Leisure has a cultural performance table made up of a large swimming pool of 6000 square meters, leisure Plaza, walking the park and many other entertainment facilities.

A contemporary showcase of traditional Khmer texture complimented by light tones, simple touches, and understated elegant hotel and resorts inspired style, our family-friendly resort is truly your haven, whether to seal a deal or on a break. Combining relaxed accommodation with warm service and the promise of a memorable stay, Angkor royal dynasty international hotel and resort is the calming setting to retreat, to get away and brighten your day.



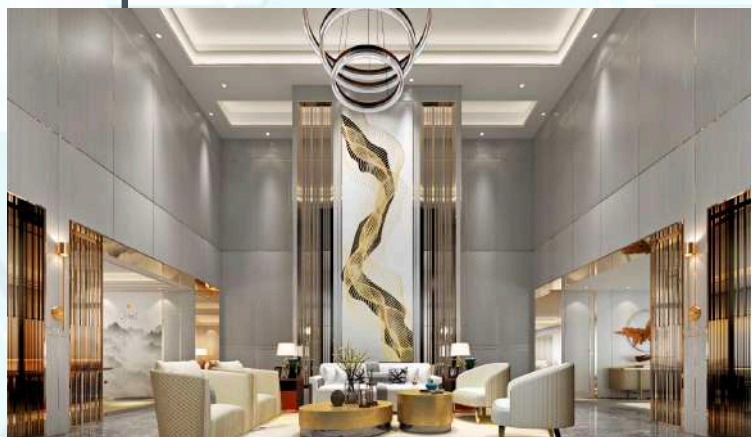
### **New Southeast Asia Light Luxury**

Cambodian cultural heritage elements with a long history as a carrier, presenting a dignified, grand, stable. Whether you're in town for business or leisure, romance or family fun, we'll delight you with the best that Siem Reap has to offer.



### **Fashion Style Hall**

Use the combination of current fashion elements and innovation to create an ultimate leisure space.



### **Room introduction**

According to the needs of guests, the hotel carefully designs different business rooms, and a total of 570 rooms are available in the presidential suite, view suite, king room, standard room, etc.

### **Recreational and leisure facilities**

KTV Club's design is of luxury high-grade service, and one can enjoy the joy of singing. In Angkor royal dynasty international hotel and resorts, one can enjoy a high-quality holiday life.





## Upscale Meeting Room

Angkor royal dynasty international hotel and resorts, which hosts business people and companies from all walks of life, it has built large upscale meeting rooms that can accommodate up to 1800 people, providing a wide range of high-spec business activities.

## Water Villas

Living in the water-only Villa at the bottom of the clear water Angkor royal dynasty international hotel and resorts is specially planned for a unique holiday area, covering an area of about 50000 square meters of water villas.

A total of 100 wooden cabins. Living in the water-only villa at the bottom of the clear water, one can enjoy a very high-quality holiday life.



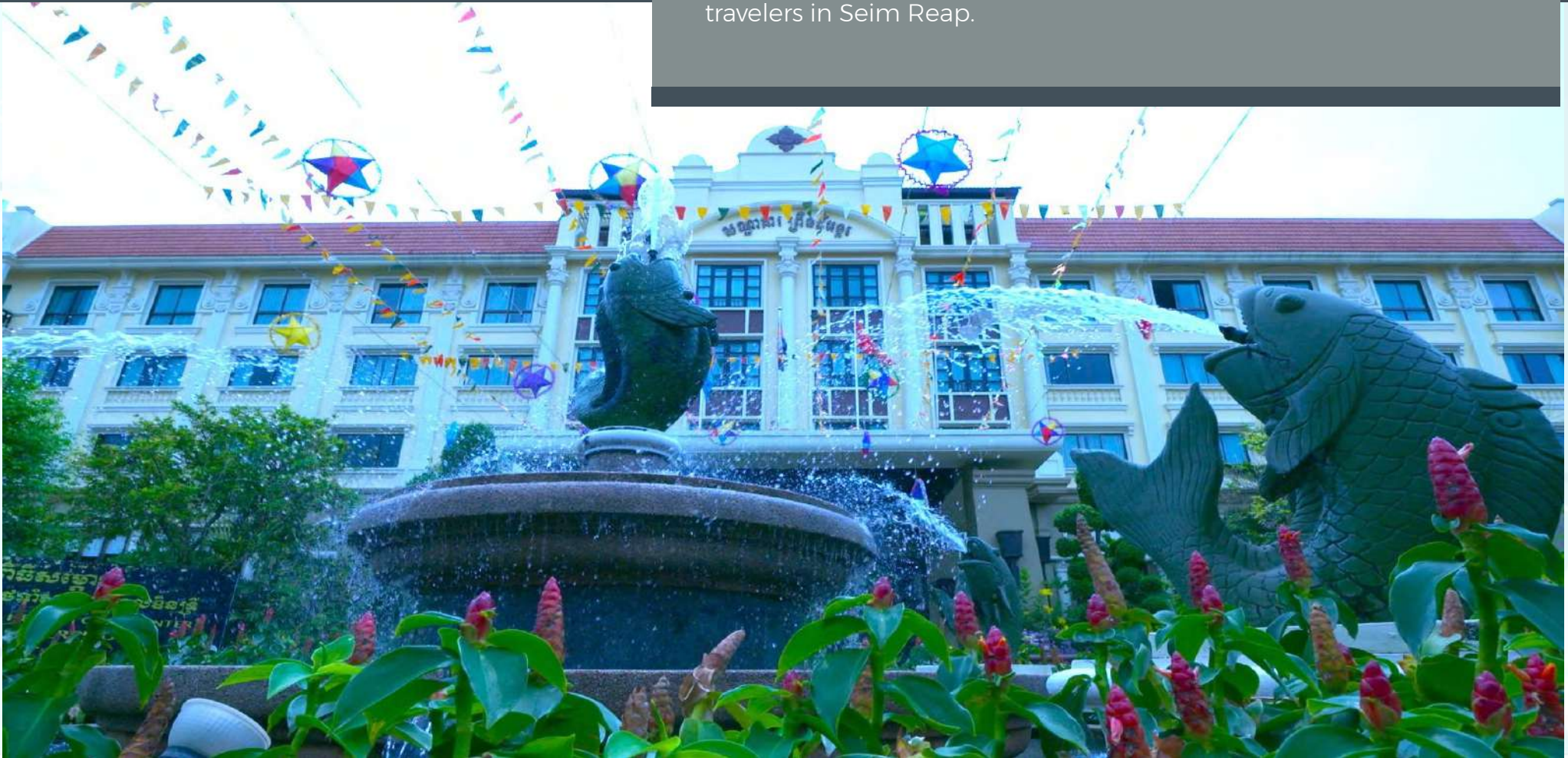


ABOUT

## Prince Hotel Cambodia

---

Prince Hotel Located in the old French district of Siem Reap, the Prince Hotel is a five-star hotel rated by the National Ministry of Tourism. And is also selected as one of the best location accommodations in Seim Reap, making it the best choice for travelers in Seim Reap.







### **Hotel luxury lobby**

Visitors from all over the world are welcome to our Prince hotel to explore an elegant, comfortable and calm lobby environment.

### **Siem Reap's largest outdoor saltwater swimming pool**

This is one of the biggest features of the hotel, and many guests enjoy sunbathing on the loungers next to the pool.

### **Spa & Fitness center**

To provide you with professional and intimate VIP services, professional fitness equipment to create a stylish and healthy life.



### **Room introduction**

All rooms are decorated in a traditional Cambodian style with wooden floors and Khmer-style furnishings for the best accommodation. According to the needs of guests, the hotel carefully designs different business rooms, the hotel has superior rooms, deluxe rooms, Chompie rooms, presidential suites, royal suites and more. There are 5 types of rooms to choose from.

### **Blue Diamond restaurant**

To satisfy visitors from all over the world, enjoy Khmer cuisine and multi-national buffet at the Blue Diamond Restaurant.

### **Sapphire Piano Bar**

Enjoy exquisite afternoon tea at the Sapphire Bar and live music every night for a relaxing and enjoyable stay.

### **Hotel location advantage**

Prince Hotel about a 10-minute walk from pub street, old market and Angkor night market.







5G  
TECHNOLOGY



ABOUT  
**IMCORE OS @ BP of**  
**YunKongFengHe**

High-tech innovation | Incubation | Investment | Industry







## Vision

Technology Empowers the Future of Wisdom

- ◆ More Creative Work
- ◆ More Comfortable Life
- ◆ Smoother Communication



# Operating system framework - four quadrants

Traditional OS four quadrant elements are on one hardware terminal

Computing power,  
Software

Data

Display

Interaction





Vision is the main way of brain information perception  
Interaction from plane to stereo  
Entertainment from the real world to the virtual world

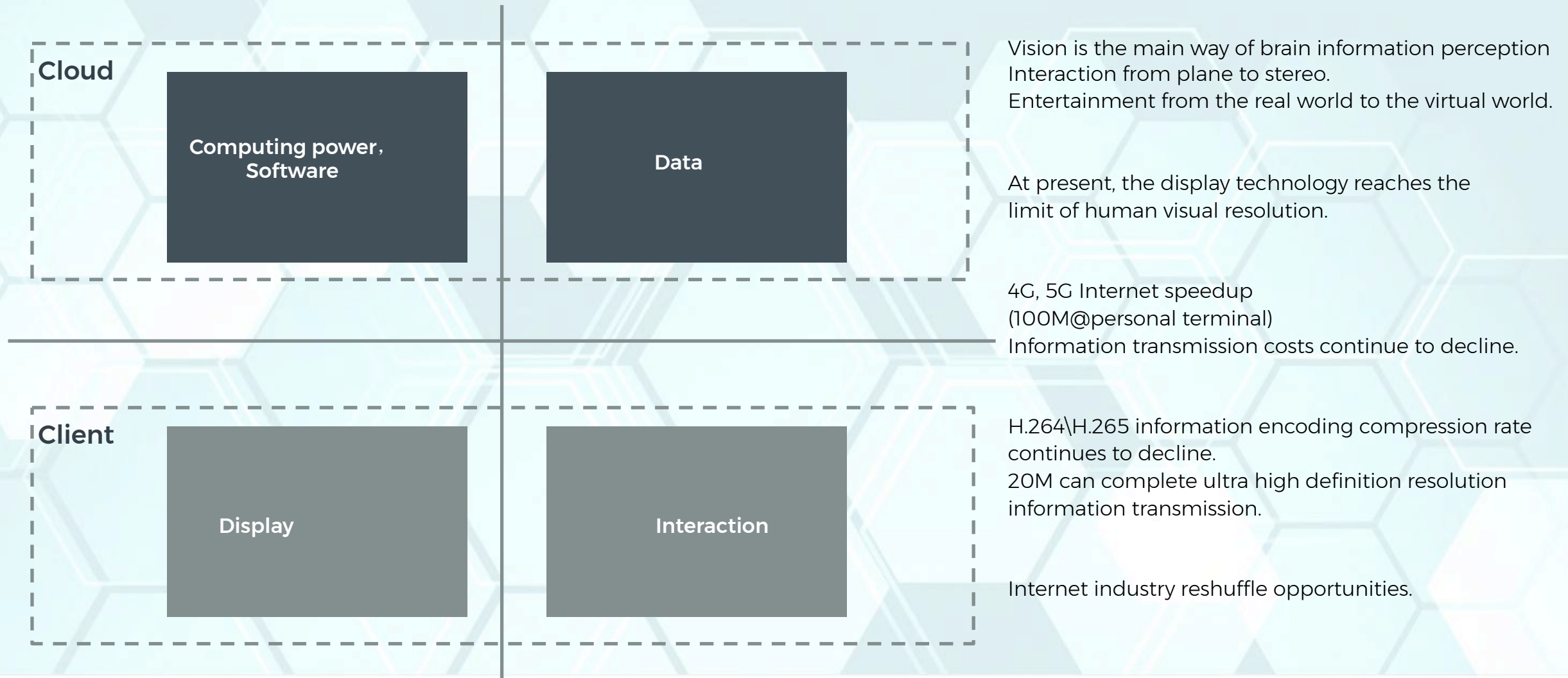
4G, 5G Internet speedup  
(100M@personal terminal)  
Information transmission costs  
continue to decline

**opportunities**

H.264\H.265 information encoding compression rate  
continues to decline  
20M can complete ultra high definition resolution  
information transmission

At present, the display technology reaches the limit of human  
visual resolution

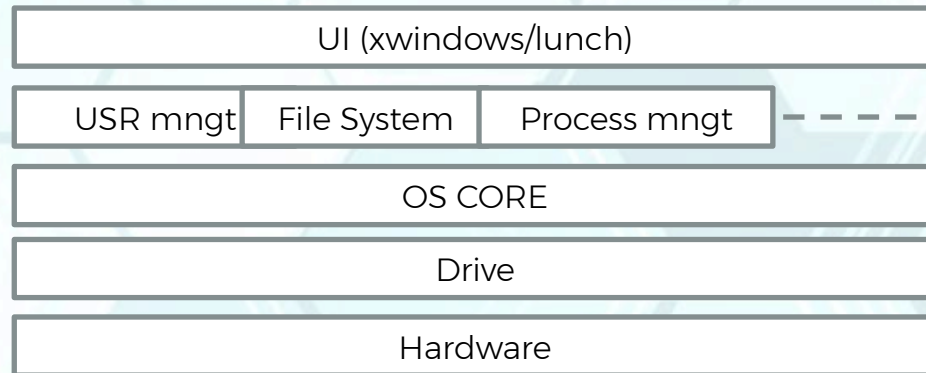
# Operating System Framework - Theoretical Basis for Four Quadrant Innovation



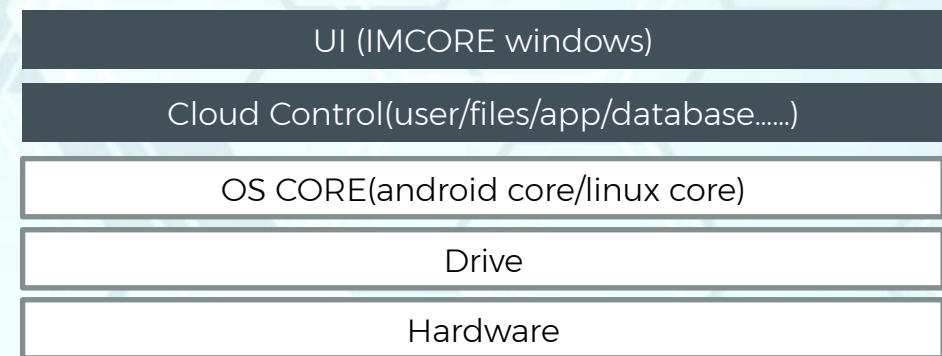


# Imcore OS system architect compare with traditional OS

## Traditional OS



## IMCORE OS



GAME

WORK

SERVICE

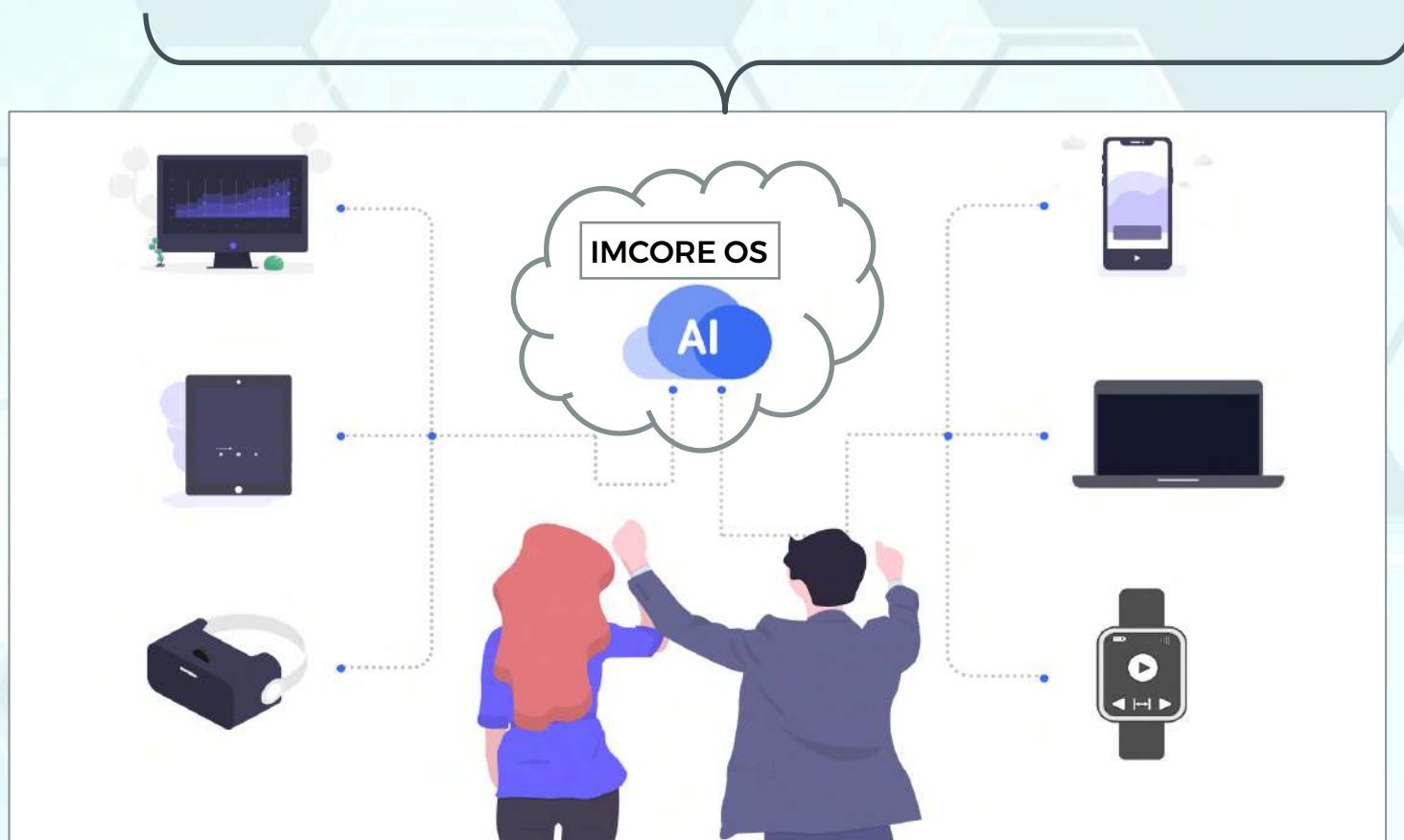
VIDEO

IM

---

ART

TRADE



Cross-platform  
Cross terminal

Break through the power limit  
Break through OS Limit

Free  
Installation

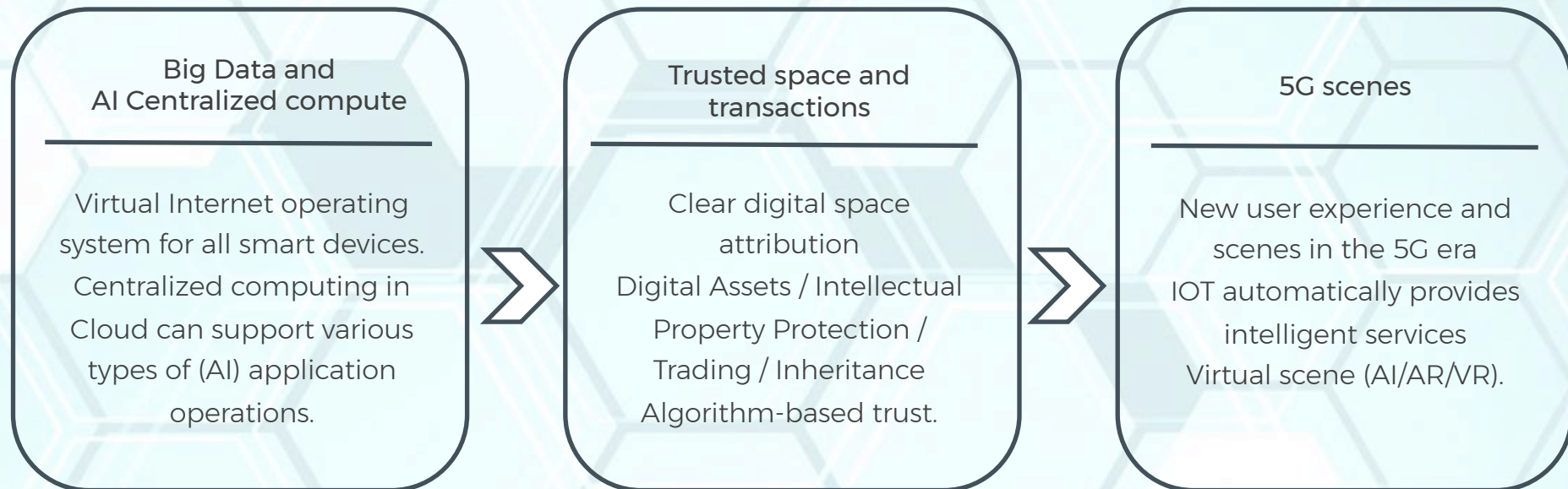


# Imcore Elements

## Three elements of Imcore

In 2014, seven states in the United States hand on inheritance legislation for cyberspace assets.

The State promulgated the "Network Security Law of the People's Republic of China" in 2018, under the background of the construction of the network space law system, IMCORE is the first cloud operating system platform in China that proposes to highlight customer cyberspace.



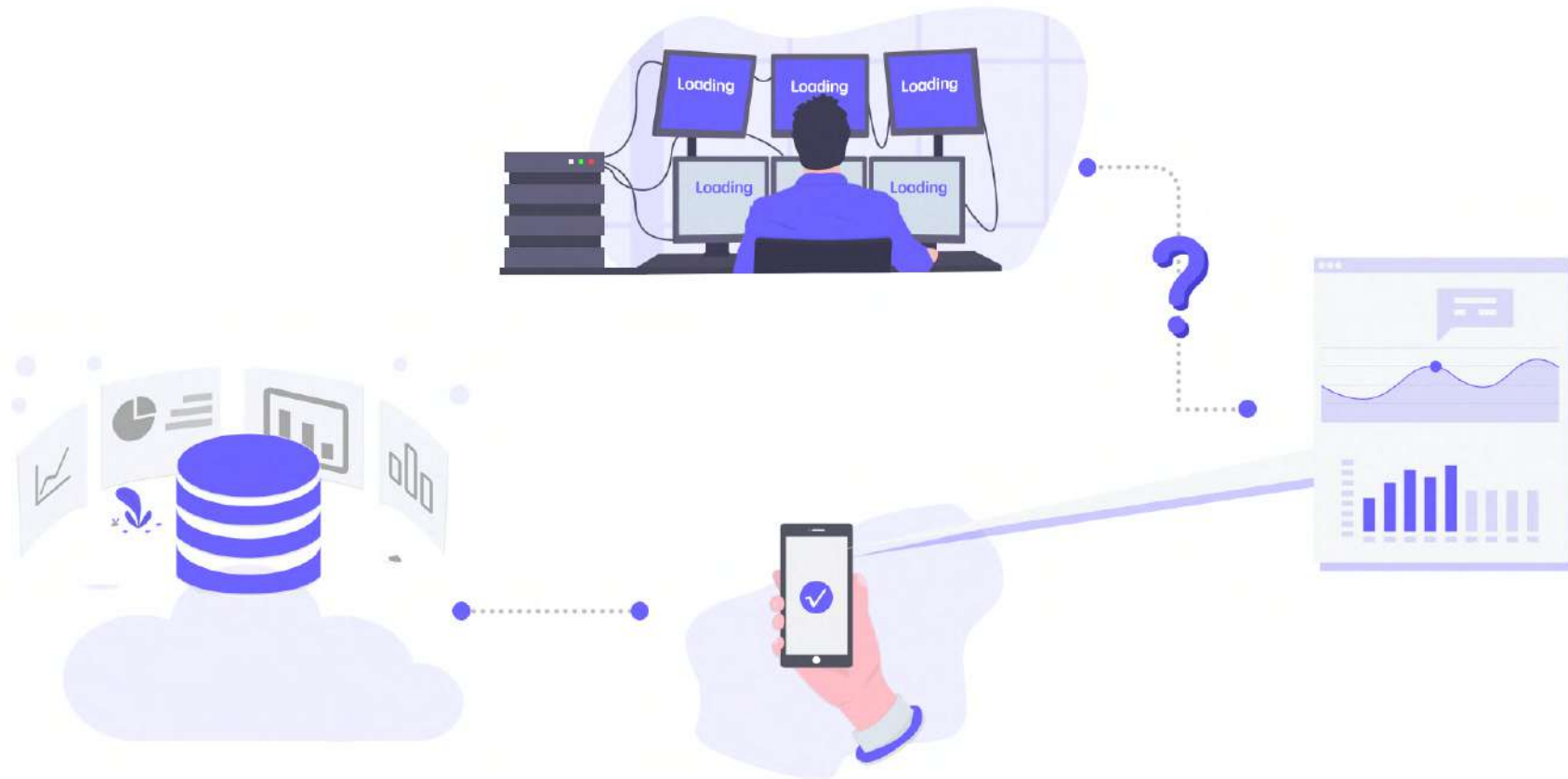
**Everything is controllable; everything is authorized; the future is possible!**

Cloud: It's cloud computing, it's cloud-connected, it's the Internet of Everything.

Empower: Authorize; enable; control.

# Imcore Empowering

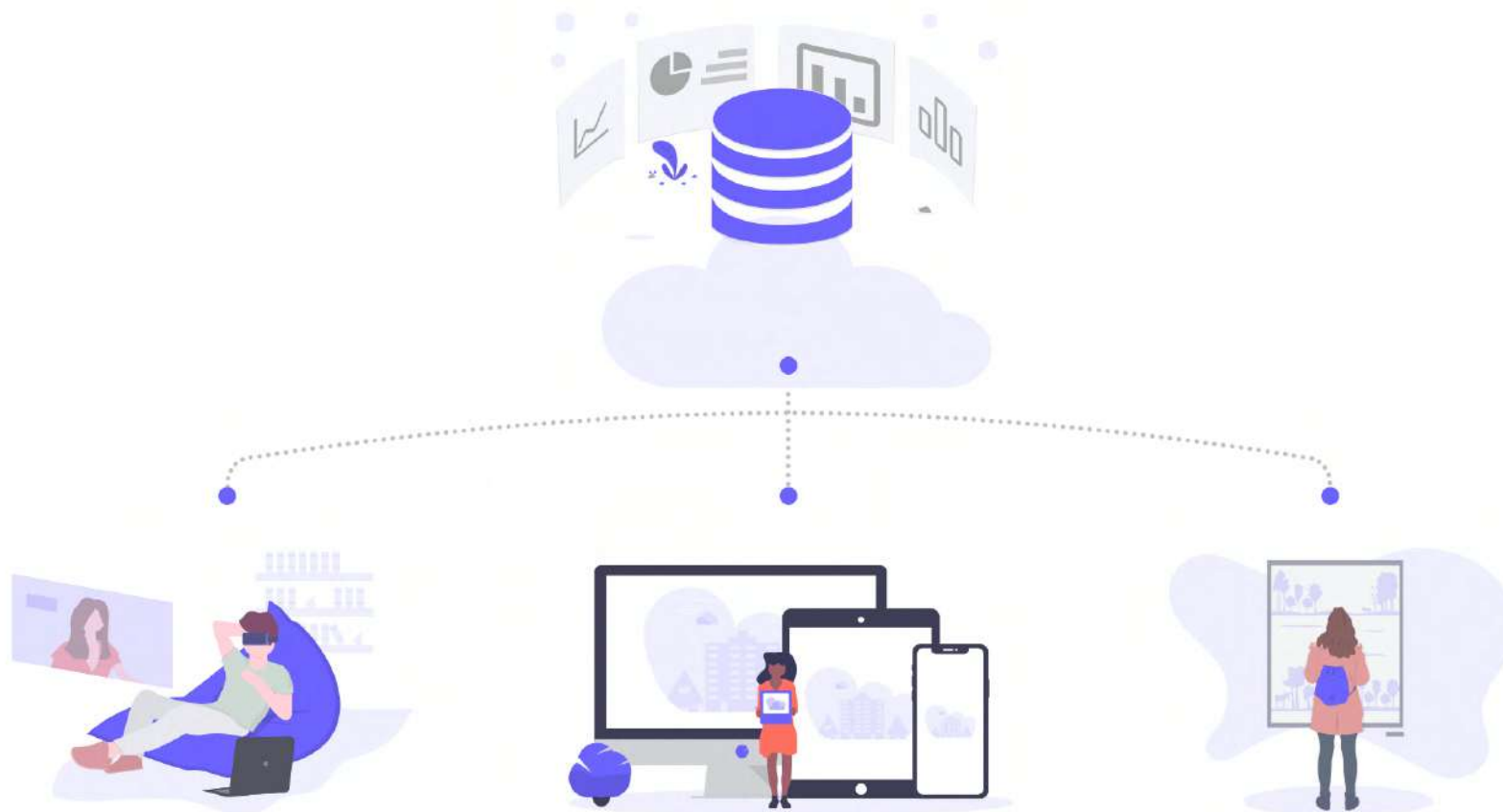
Centralized computing binding terminal power





# Imcore Empowering

Cross-platform application supported, no need installation, no need space



# Imcore Empowering

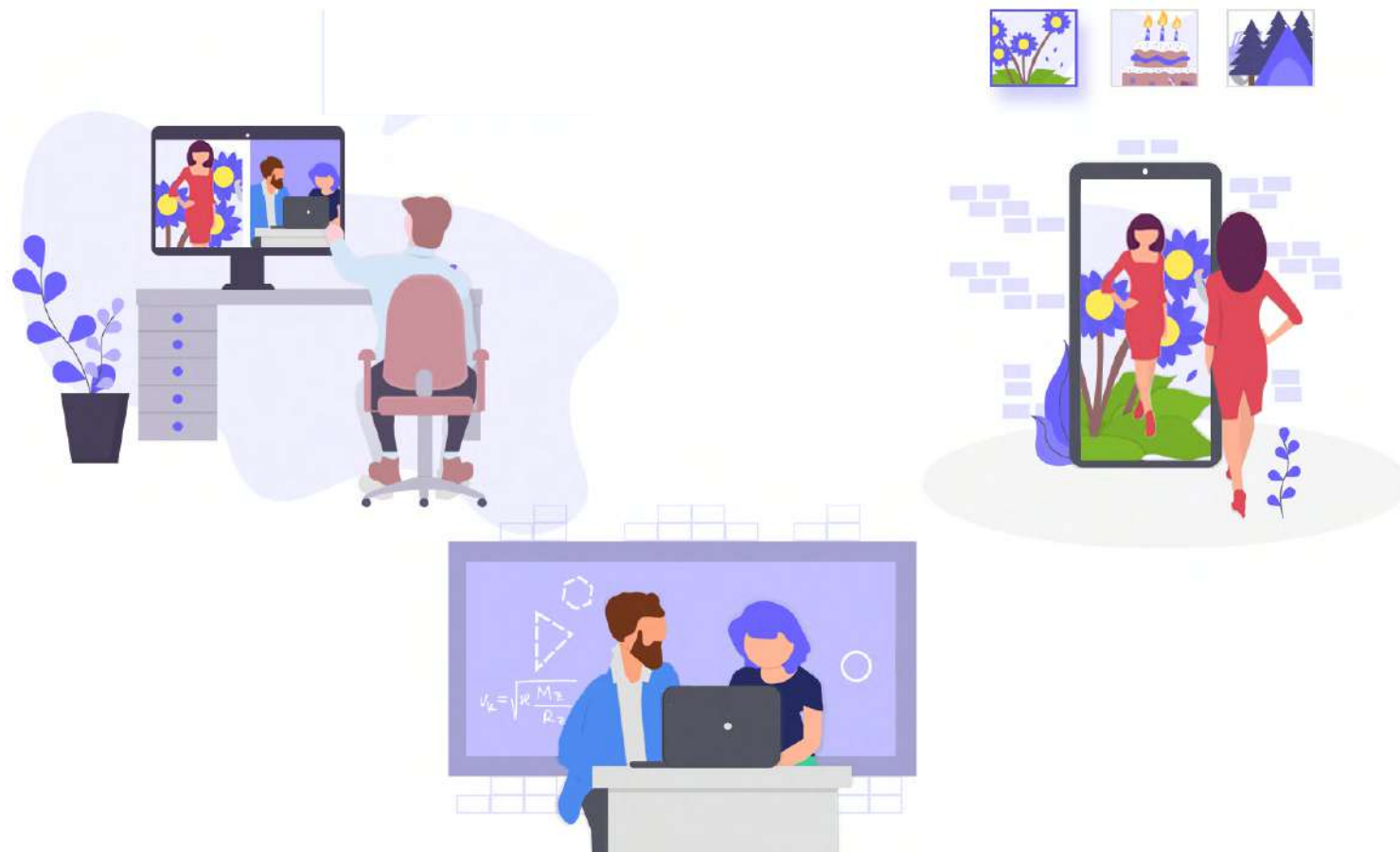
Manageable observation and control sharing to make collaboration more free





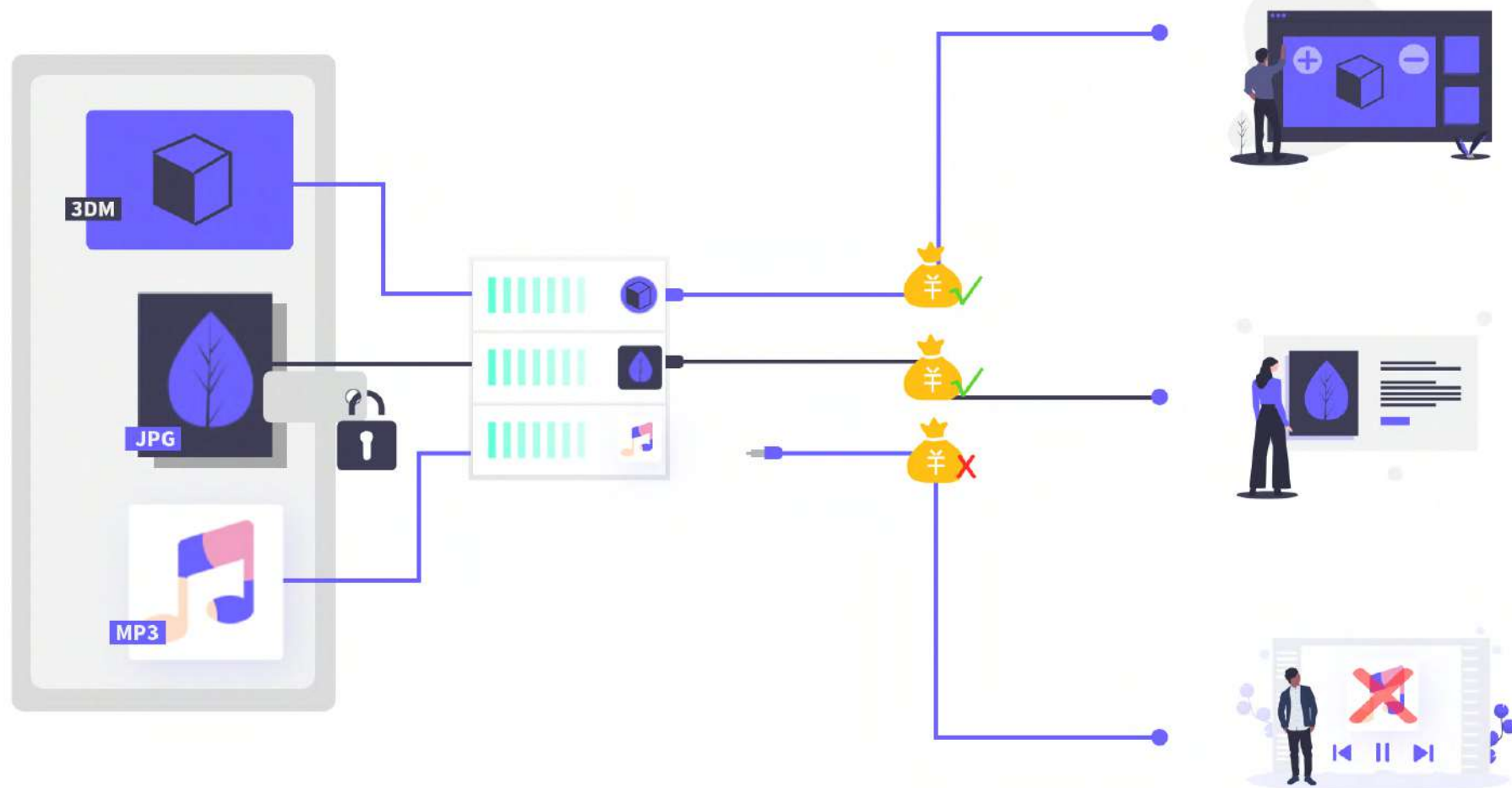
# Imcore Empowering

Space and AI technology help a more immersive social experience



# Imcore Empowering

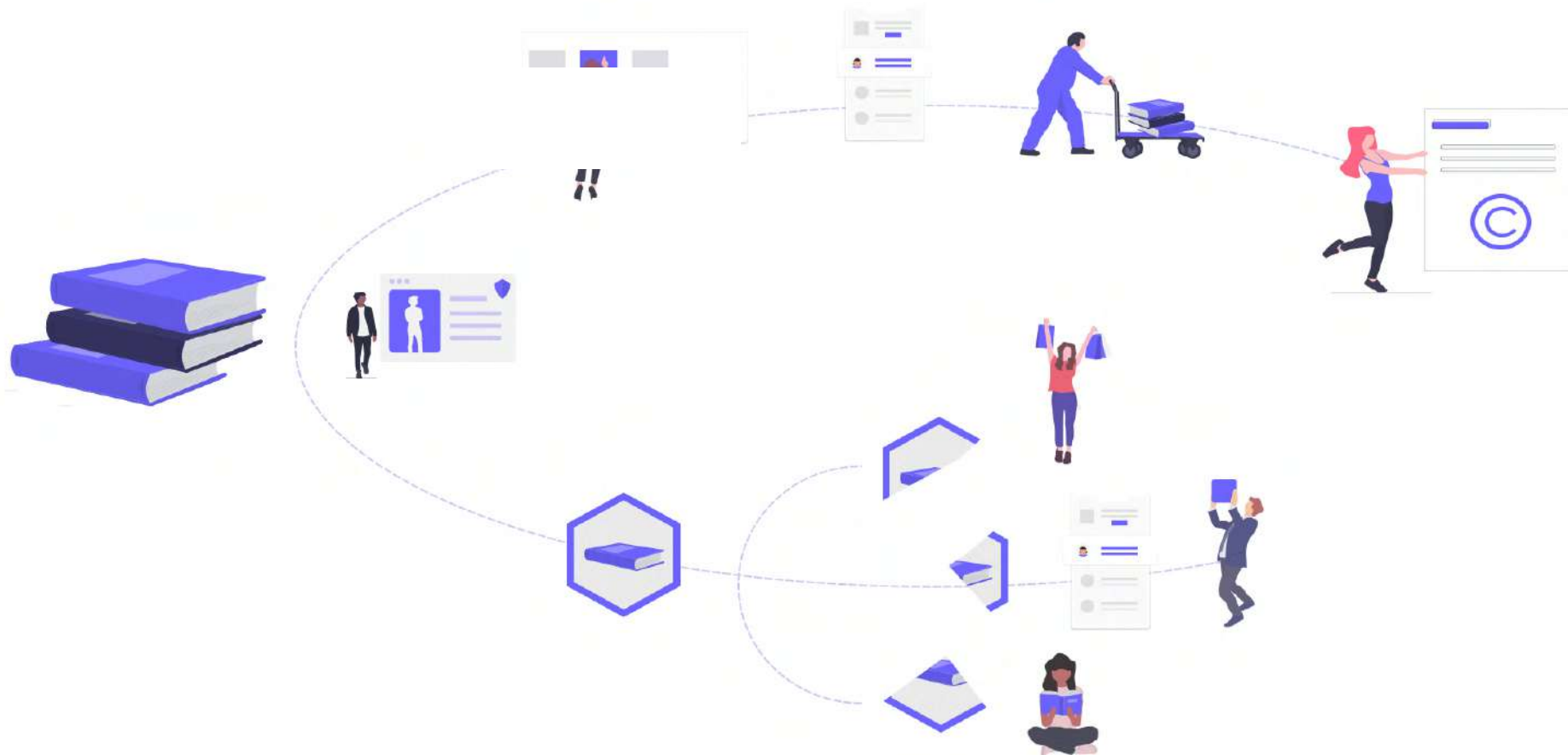
Clarify the ownership and using rights of digital assets





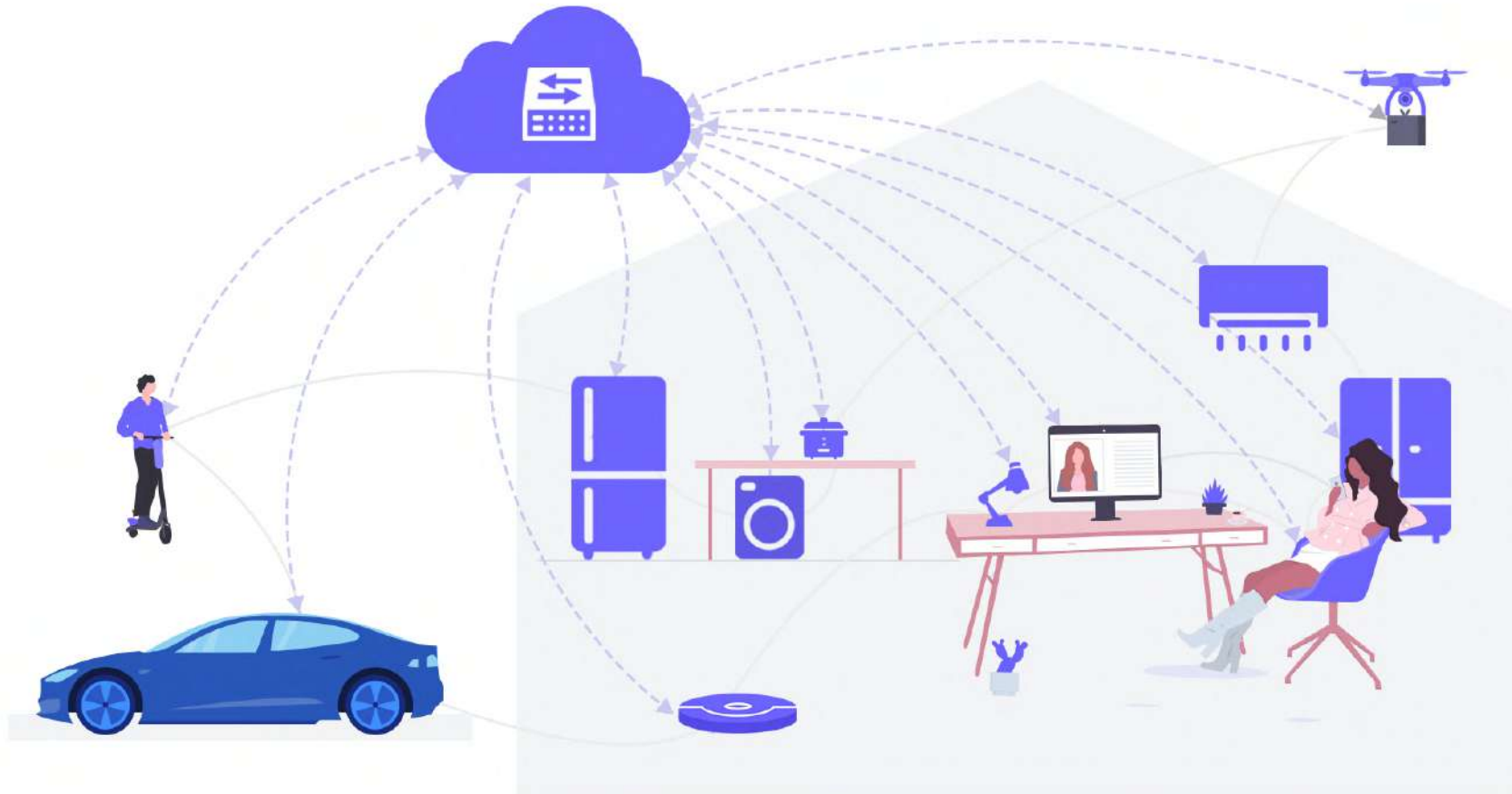
# Imcore Empowering

Safe and traceable copyright transactions and equity segmentation and quotas



# Imcore Empowering

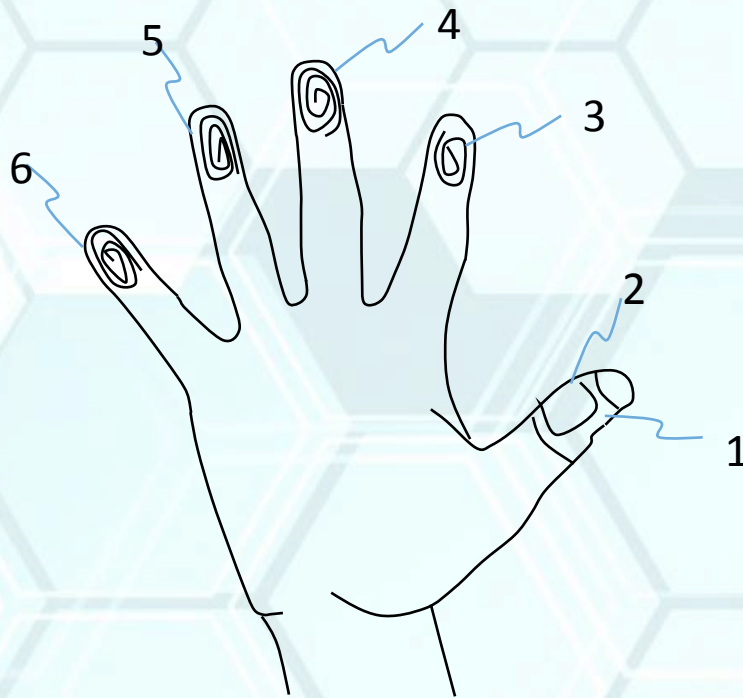
Internet of everything makes the future more comfortable and efficient





# Imcore Accessories

Smart Terminal – Ring for IMCORE OS



Principled sample machine

The first choice for LARGE SCREEN operation and VR/AR operation  
Built-in encryption chip to ensure personal identification and transaction reliability

# Imcore Technology

Platform key technologies



The most cutting-edge  
cloud computing  
technology in the world



Matching 5G's new  
network transmission  
framework and  
business model



Disruptive  
communication and  
intelligent interaction  
technology and a new  
generation of intelligent  
hardware



Blockchain property  
protection, AI  
processing, big data,  
VR/AR and many other  
plug-ins to create a  
smart digital future







## Imcore Social Responsibility

---

### Compliance with the security strategy

- Network space security Allow uncontrollable networks, operating systems, and chips to be packaged in security sandboxes for data security and information security.

### Technological disruption brings industry opportunities

- Break down technical barriers of the commercial operating systems and terminal chips, and use technologies such as cloud computing, relying on modern 5G and other technologies to build a new operating system to stimulate the new industry ecological revolution.

### New smart industry, green and environmental protection

- The three elements of space, capital and tools support brain entrepreneurs and create a new type of knowledge industry (brain: software development, artistic creativity, cultural communication, knowledge education...).
- Protect intellectual property rights and make more intellectual property work.
- Building a digital space ecosystem that provides industrial upgrading, more jobs and opportunities.
- Promote structural adjustment and upgrading of various industries.

### Promote structural adjustment and upgrading of various industries

- Through the ecological construction of the cloud operating system, stimulate the creation of entrepreneurial passion within the industry, AI, IoT, big data, 5G empowerment of various industries.
- Knowledge education, pension industry, cultural field, medical health field.



## Promote more industry upgrades

Health @Hospital / medical examination



Education @school/training



Pension @community/civil administration





INSURANCE



ABOUT

# Sino-Thai Insurance

Bangkok, Thailand

Sino-Thai insurance is a comprehensive insurance company established in Thailand. We focus on health-care insurance (especially cancer insurance) and the insurance of the whole industrial chain of medical marijuana. based in Thailand, Sino-Thai covers ASEAN and China and faces the world.

Sino-Thai insurance is an important strategic fulcrum for the overall development plan of the Ameri-Asia group in Thailand.



CAFTA  
LASJT.ORG



CHINA



BRUNEI



MYANMAR



INDONESIA



SINGAPORE



MALAYSIA



CAMBODIA



PHILIPPINES



LAOS



THAILAND



VIETNAM



We serve healthy Thailand and work for building ASEAN



## Why we have Sino-Thai insurance

### On February 19, 2019, the Thai government legalized medical marijuana

The latest version of the 2019 Drug Punishment Act (7th edition) reclassifies marijuana as an anesthetic that can be used for medical research and development of medical results, as well as for the necessary treatment of some diseases under the supervision of doctors.



### Medical marijuana will contribute to huge economic growth to Thailand

Thailand has advantaged climatic conditions and flexible shipping lines, which makes Thailand has a cost advantage in the development of medical marijuana. In the next three years, the global cannabis market is expected to grow at a high rate of 22% per year. By 2022, the total value of the global cannabis market will come to \$23 billion, and medical marijuana could bring us \$3 billion per year to Thailand's finance.

### China's total direct investment in Thailand has been the top three foreign investment in Thailand.

China's investment in Thailand covers many fields, including new technology, new energy, new materials, and production capacity cooperation in Chinese traditional advantageous industries, machinery & auto parts, electronics, building materials, food and so on.

CP Land Plc, a subsidiary of CHAROEN Pokphand Group, is working with China Guangxi Construction Group to build an industrial park in the eastern economic corridor of Thailand (EEC) with an investment of more than 60 billion baht (about US \$2 billion), targeting Chinese investors from Chinese mainland, Hong Kong and Taiwan.

Trans-Asian Railway schematic

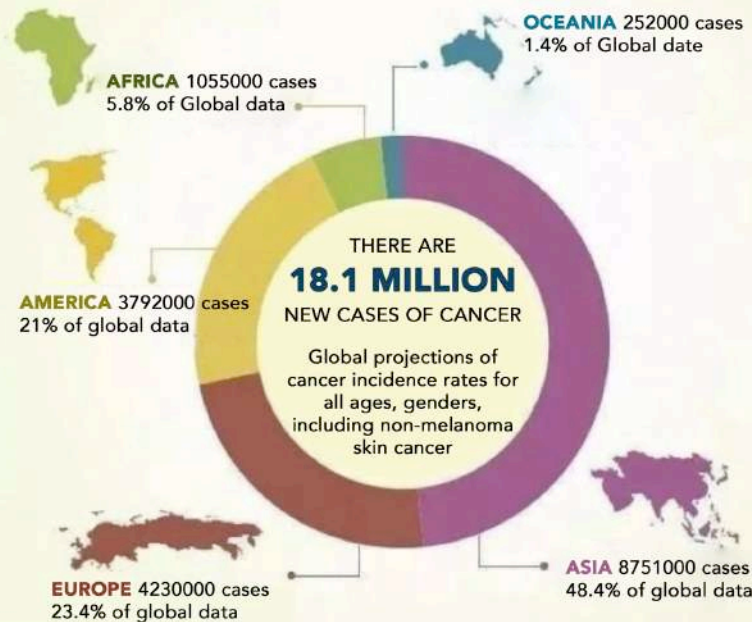


**The construction and opening of the China-Thailand railway will be the driving force and springboard for Thailand's social and economic development in the next 10-20 years.**

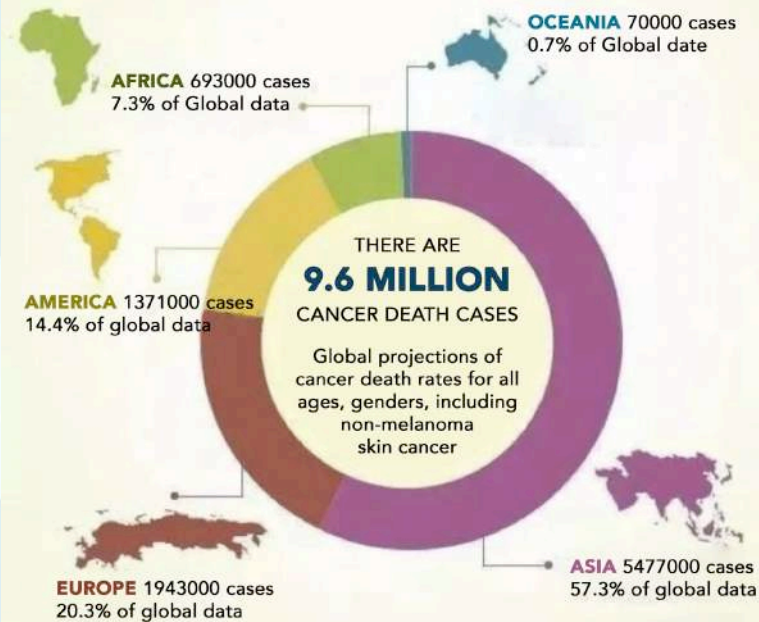
The number of Chinese tourists to Thailand exceeded 10.54 million in 2018, which generates revenues of 580.699 billion baht (about \$19.4 billion) for the Thai government. The opening of the China-Thailand railway has provided convenient transportation facilities for Chinese people to travel to Thailand, buy houses and live out their lives in retirement, and also has brought certain expectations to the growth of related industries. Meanwhile, overseas medical tourism has become the fastest-growing emerging industry in the world and an irresistible new consumer trend while Thailand is one of the countries with the most developed medical tourism. With the opening of the China-Thailand railway, the rapid development of Chinese medical tourism to Thailand is around the corner.



## GLOBAL CANCER INCIDENCE IN 2018



## GLOBAL DEATH RATE FROM CANCER INCIDENCE IN 2018



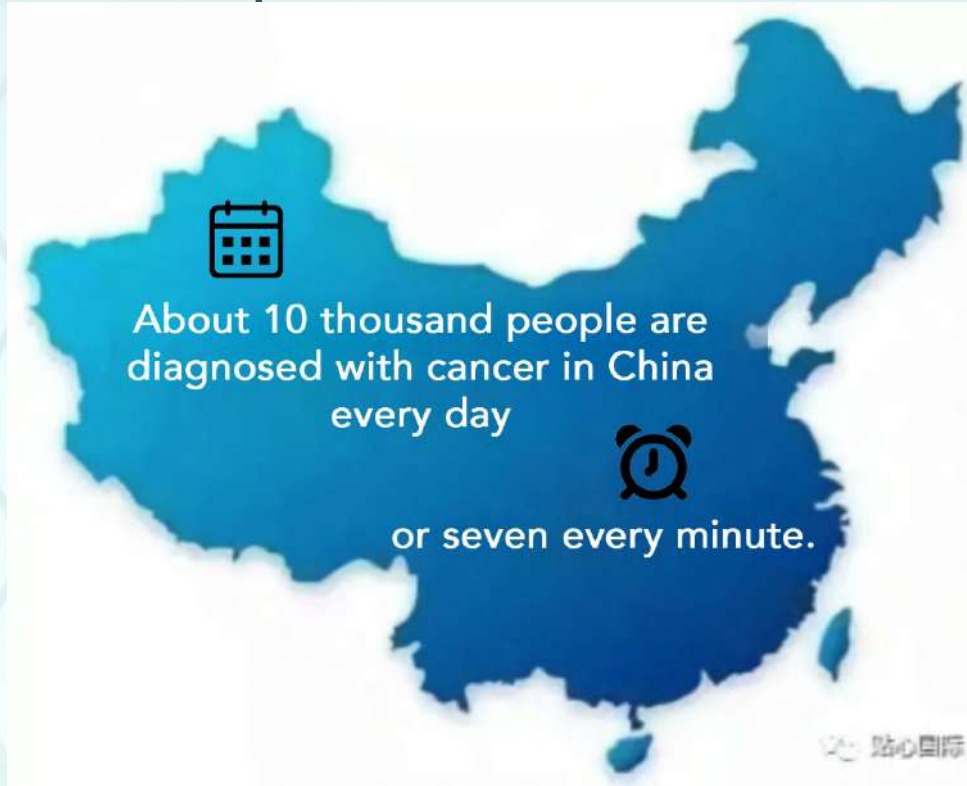
**There is a huge demand for cancer insurance globally, especially in Asia.**

**What does global cancer data tell us about how far cancer really is?**

Since the 20th century, the contact of people and carcinogenic factors are more and more close, because of the worsening pollution of the human living environment, working stress and mental pressure, and poor lifestyle. The incidence of the malignant tumor increased year by year. A malignant tumor has exceeded the cardiovascular and cerebrovascular diseases and has become the most fatal of human health.

*According to the latest global cancer statistics for 2018, the global cancer report, released by the International Agency for Research on Cancer (IARC), part of the World Health Organization, the number of new cancer cases worldwide increased by 29% in 2018 compared with 2017. In 2018, there were 18.1 million new cancer cases (9.5 million men and 8.6 million women) and the death toll is 9.6 million (5.4 million men and 4.2 million women), increasing the global cancer burden.*

*Almost half of new cancer cases and more than half of cancer deaths worldwide in 2018 occurred in Asia, which accounted for about 48% of new cancer cases and 57% of deaths of global cancer. This is mainly because many cancer cases are diagnosed late. Because most cancer cases are diagnosed and discovered in the late stage of cancer, the probability of cure is small. Of course, this ratio is concerning Asia's huge population base.*



**China, the largest country in Asia, was reported 3.804 million new cases and 2.296 million deaths annually in 2018, ranking first in the number of cancer cases and deaths worldwide.**

That means 21 out of every 100 cancer patients in the world are Chinese, and more than 10 thousand people are diagnosed with cancer in China every day, or seven every minute. In the past 20 years, the incidence of cancer in China has been on the rise year by year. Lung, breast, liver, bowel, stomach, esophageal and cervical cancer are still on the rise. The incidence of cancer causes heavy economic burden and psychological trauma to the country, society and individuals, and the prevention and treatment of cancer has become an important public health issue in China.



## **China is the country with the highest cancer incidence and mortality rate in the world. However, the environment for cancer prevention and treatment needs to be improved in the following six aspects:**

### **Awareness of prevention and early screening is weak**

More than 90% of cancer patients may have no obvious symptoms in the early stage, and by the time seeing a doctor with obvious symptoms, they are often in the middle to late stage, losing the best time to treat.

### **Poor medical experience**

In each stage of diagnosis and treatment, it takes a long time for patients to queuing for registration, examination and other reports. And the mechanism of hospital referral and inter-hospital referral is absent, so patients need to go to different hospitals and departments to queue for registration and treatment again.

### **Difficulty in obtaining new drugs**

It is difficult to know the latest treatment plan.

The foreign innovative medicines are not listed in the domestic market.

And some innovative medicines are not available in hospitals even after listing.

Prescriptions are limited after enrolling in medical insurance.



#### **Difficulty in obtaining information**

- The sources of treatment-related information are limited.
- Little communication with the hospital.
- More than half of the patients communicate with the competent doctor for less than 10 minutes at a time.
- Difficult to understand the doctor's explanation and have no access to clinical trial information.

#### **Heavy psychological pressure and economic pressure**

Tumor patients are under a huge amount of stress they worry about the treatment cost and family burden, and there is little psychological care from the hospital. Before admission, they need to call to ask whether there is a bed, and nearly half of the patients have not been followed up.

Other issues such as many high-value innovative drugs are not covered in the medical insurance system, the reimbursement rate of drugs in the medical insurance system is too low, and outpatient services cannot be reimbursed.

#### **Hospitals, pharmaceutical companies and traditional insurance companies are discrete.**

In the traditional model of cancer treatment, hospitals and insurance companies and even pharmaceutical companies are independent and discrete, they are different profit parties. Due to the high cost of cancer treatment, many specific drugs and therapies may not be covered by basic medical insurance. As for commercial insurance, its design of serious disease products in China's insurance market is complicated and hardly understood by consumers. So it is difficult for consumers to choose a correct, appropriate, low-cost insurance for themselves in a short time.





## **What will Sino-Thai insurance do?**

**We aspire to be a professional cancer insurance provider in Asia.**

Provide professional cancer insurance, to solve the difficulties of cancer patients during treatment, claims and other links.

**We aspire to be a professional insurance provider for the whole medical marijuana industry chain in Thailand**

Introduce advanced international technology and underwriting experience to customize insurance products and services for Thailand's medical marijuana industry.

**We aspire to be a professional insurance and reinsurance provider for medical tourists in Thailand.**

Provide innovative insurance products and services such as exclusive cancer insurance, specific drug insurance and nursing insurance for medical tourists in Thailand.



**We aspire to be a professional third party administrator of Thailand's exclusive client medical insurance**

Provide timely and considerate medical services, efficient and convenient third-party management of medical insurance, as well as hospital direct payment and other insurance products and services for exclusive clients, to ensure the quality of medical services. Meanwhile, it can also reduce clients' medical expenses, simplify medical procedures and improve medical efficiency.

**We aspire to be a professional insurance provider for private hospitals in Thailand.**

Provide innovative insurance products and services for medical liability risk, physician liability risk, surgical liability risk and other risks of Thai hospitals, to boost the development of Thailand's private hospital industry, and to become the benchmark and leader of the future private hospital industry in Asia.

**We aspire to be a professional insurance and reinsurance provider for Chinese merchants based in Thailand.**

Provide customized insurance and reinsurance products and services for the assets, legal liabilities and risks of thai-based Chinese merchants to ensure the stability of continuing operations in Thailand.



## What will Sino-Thai insurance do?

We provide integrated solution which includes insurance, physical examination, medicine, hospital, rehabilitation and health management.

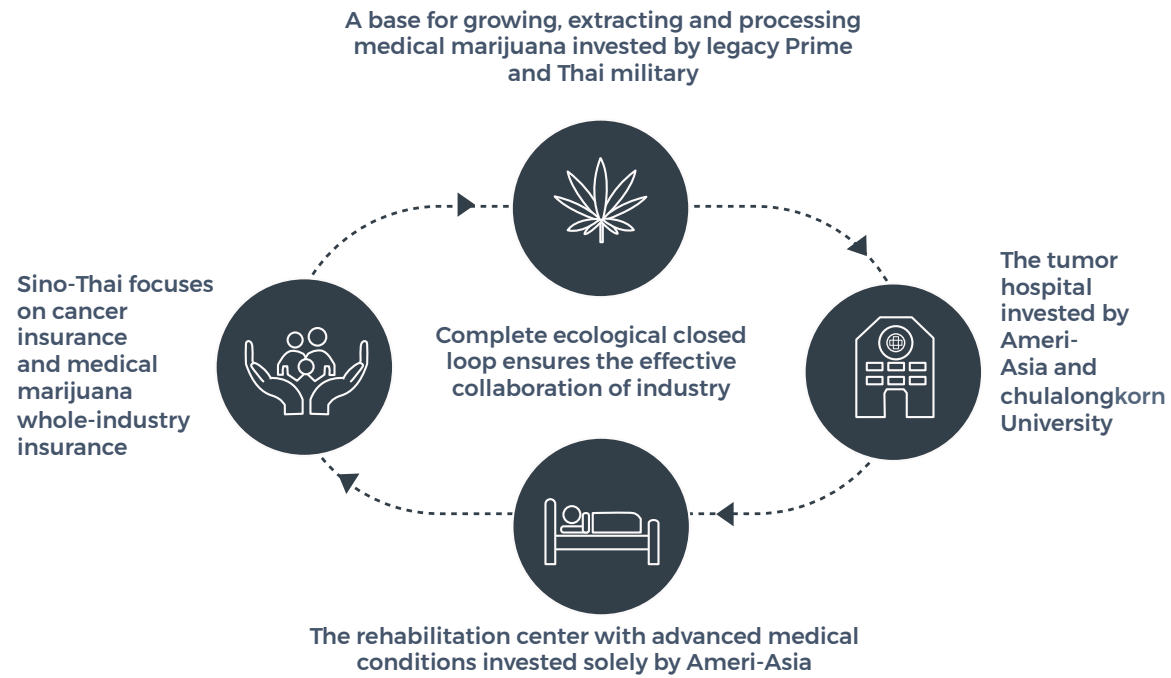


### **Sino-Thai's cancer insurance is "cancer prevention insurance"**

Traditional insurance does not actively provide help to protect clients from cancer. Prevention or early detection of cancer is the core need. Thai Ameri-Asia group which is Sino-Thai's strategic partner, has partnered with Chulalongkorn University, a pioneer in higher education in Thailand, to invest in the construction of a cancer hospital. Through cooperation with them, Sino-Thai insurance prevents cancer instead of waiting for cancer. Through screening to achieve early detection, early diagnosis and early treatment to reduce the incidence of cancer, especially the occurrence of advanced cancer.

### **Clients of Sino-Thai insurance can enjoy the perfect supporting services of exclusive hospitals and rehabilitation centers.**

After physical examination and early screening, the client can be directly admitted to the exclusive tumor hospital and rehabilitation center if he or she is found to be sick. The doctor team will make the most appropriate medical and rehabilitation plan according to the patient's condition.



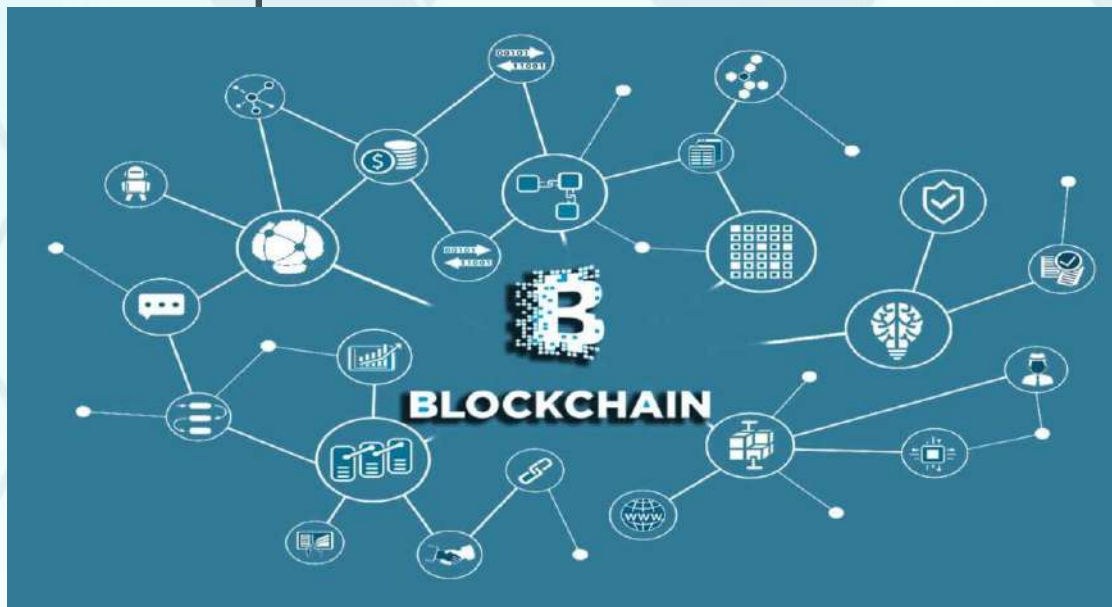
### Exclusive rehabilitation therapy of Sino-Thai insurance

Thailand Legacy Prime group, the strategic partner of Sino-Thai insurance, has cooperated with the Thai military to carry out the cultivation, extraction, and processing of medical marijuana. After the clients of Sino-Thai insurance are admitted to exclusive hospitals and rehabilitation centers, they could use the drugs containing active ingredients of medical marijuana to relieve physical pain and psychological anxiety, and greatly improve the quality of life and treatment effect.

**Complete package mode of cost-effective cancer treatment: Insurance + physical examination +medicine +hospital +rehabilitation + health management.**

Sino-Thai insurance research on single diseases cancer insurance with an exclusive hospital; it also studies specific drugs insurance for cancer with the biopharmaceutical company owned by Thailand Legacy Prime group; besides, it researches on cancer screening insurance with a health management company, as well as the rehabilitation center for cancer care insurance and so on. By collectivizing ecological cooperation, Sino-Thai finds a way to improve the possibility of cancer cure and reduce the cancer treatment fees during every stage. With the internal effective linkage of strategic partners and blockchain technology which improves the efficiency of the use of commercial insurance, Sino-Thai explores a cost-effective and complete package includes insurance, physical examination, medicine, hospital, rehabilitation and health management for the treatment of cancer to realize the ultimate goal of benefiting the country and the people.





## What will Sino-Thai insurance do?

**We are the pioneer and leader of Blockchain technology and full indemnity insurance.**

Currently, more than 20% of the global ongoing exploration of Blockchain application scenarios involves insurance. As an insurance industry that regards "trust" as its core value proposition, it is a "natural match" with the Blockchain technology that naturally carries "trust gene". Insurance has become one of the most ideal scenarios for the implementation of the Blockchain, and it is worth expecting the subversive changes.

**Electronic notes based on Blockchain technology are applied to full indemnity insurance.**

Through the "international digital settlement center for micropayments", it is feasible for us to connect key links such as hospitalizing at home and abroad, Blockchain electronic medical notes, reimbursement and claims, and global third-party payments. When filing a claim, the clients only need to operate in the settlement center to enjoy the global efficient insurance with full compensation anytime and anywhere.

The biggest benefit of Blockchain electronic medical notes is that the underlying data of the electronic notes, hospitals, and insurance companies are connected, which greatly reduces the time of bill verification when filing insurance claims, thus shortening the time for clients to obtain compensation. After purchasing cancer treatment insurance of Sino-Thai, clients can open an account of "international digital settlement center for micropayments" at the same time for electronic medical bill management, cross-border payment collection and medical expenses paid. When clients are ill, they can seek treatment for cancer in China's 3A hospitals, and then be transferred to Thailand's Ameri-Asia hospital for treatment and rehabilitation, or they can be directly admitted to Ameri-Asia hospital for treatment. After receiving medical treatment in the cooperative hospitals in domestic and overseas, the client only needs to file the insurance claims in the relevant section of the clearing center. After that Sino-Thai will directly settle the claims with the cooperative hospitals according to the policy terms, and the client does not need to pay before reimbursement. Besides, Clients can view self-paid drugs and treatment fees online and pay through the clearing center. Before the clients arriving in Thailand, Sino-Thai will directly dock with Ameri-Asia hospital, which ensures the clients could be directly admitted to Ameri-Asia hospital for treatment without worrying about that exchanging foreign currency for medical expenses and other issues, to strive for the optimal treatment period for them. Also, clients will be able to view all global records of their cancer treatment online at any time.

Regal Assets Group Holding, Ltd. has independently developed high-performance, privacy-preserving, and finance-level Blockchain technology. Sino-Thai compensation service, which combining this technology, is highly appreciated by clients for its simplicity, high efficiency, and quick arrival. Blockchain electronic bill has the characteristics of complete traceability of the whole process and non-tamperable information, which is consistent with the original bill, to effectively avoid fake bills and improve the bill supervision process. It will be connected with each bill stakeholder so that the source, authenticity, and accounting of each bill can be traced, to avoid the situation of over-reporting, false declaration, and false verification during the bill circulation. Also, it also has the advantages of saving the manual audit process, reducing the cost, simplifying the process, improving efficiency, and ensuring data security and privacy.

Since Blockchain can provide public ledger and encrypt personal data, insurance companies can also use their apps to reduce fraud and liability related to cross-border and multi-currency instant payments, to effectively addressing the two biggest problems in the insurance industry: information asymmetry and trust.





**Sino-Thai insurance are working together with Blockchain experts from Australia to create an innovative business model of "one insurance policy, claims worldwide":**

- ✓ Blockchain technology can greatly reduce the operating cost of the insurance industry;
- ✓ Blockchain technology can significantly improve the efficiency of insurance companies' claims to enhance the satisfaction of customers' experience.
- ✓ Blockchain can enhance the breadth and depth of product development of insurance companies.
- ✓ Blockchain can enhance the self-elasticity of insurance products and improve the efficiency of capital allocation.
- ✓ Blockchain helps the insurance industry to identify and prevent the insured's moral hazard and the insurer's claim risk.
- ✓ Blockchain can achieve data sharing between insurance institutions and other relevant organizations, and create the benefits of information resources to serve the public.

Cancer-specific insurance can be "Blockchain" in the links of insurance, detection, reporting, and claim. We will use the mode of "insurance company + medical health management center" to build a complete package of "physical examination - medicine - medical treatment - rehabilitation", to meet the demand of the high performance with low cost of medical care to respond to clients need.

We will achieve step by step from "medical treatment ecologicalization" to "cancer insurance specialization", and to "client detailed" to "high-end medical industrialization", and realize "claim worldwide systematization"..



### **Sino-Thai Insurance**

*Thanks to these advantaged resources and background, we believe that after five years of standardized operation and development, Sino-Thai Insurance will become the most innovative, technologically advanced and fully networked comprehensive Insurance company in Thai and even in the ASEAN region.*